

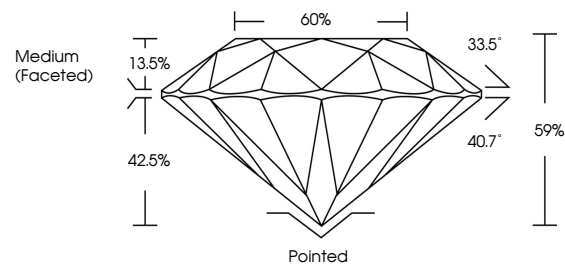


ELECTRONIC COPY

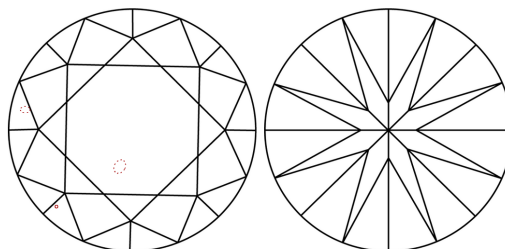
LABORATORY GROWN DIAMOND REPORT

LG678579137
Report verification at igi.org

PROPORTIONS



CLARITY CHARACTERISTICS



KEY TO SYMBOLS

Red symbols indicate internal characteristics.
Green symbols indicate external characteristics.

COLOR

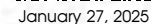
D E F G H I J Faint Very Light Light

CLARITY

IF VS¹⁻² VS¹⁻² S¹⁻² |¹⁻³

Internally Flawless	Very Very Slightly Included	Very Slightly Included	Slightly Included	Included
------------------------	--------------------------------	---------------------------	----------------------	----------

LABORATORY GROWN DIAMOND REPORT

IGI Report Number **LG678579137**Description **LABORATORY GROWN DIAMOND**Shape and Cutting Style **ROUND BRILLIANT**

Measurements 7.37 - 7.44 X 4.37 MM

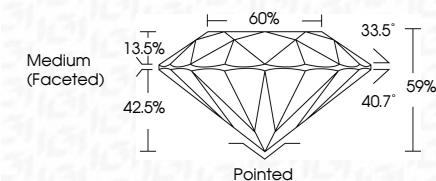
GRADING RESULTS

Carat Weight **1.46 CARAT**

Color Grade D

Clarity Grade VS 2

Cut Grade **IDEAL**



ADDITIONAL GRADING INFORMATION

Polish **EXCELLENT**Symmetry **EXCELLENT**Fluorescence **NONE**Inscription(s)  LG678579137

Comments: This Laboratory Grown Diamond was created by Chemical Vapor Deposition (CVD) growth process.
Type IIa



© IGI 2020, International Gemological Institute

FD - 10 20

www.igi.org

THIS DOCUMENT WAS PRODUCED WITH THE FOLLOWING SECURITY MEASURES: SPECIAL DOCUMENT PAPER, INK SCREENS, WATERMARK BACKGROUND DESIGNS, HOLOGRAM AND OTHER SECURITY FEATURES NOT LISTED AND DO EXCEED DOCUMENT SECURITY INDUSTRY GUIDELINES

January 27, 2025
GI Report No LG678579137
ROUND BRILLIANT

7.37 - 7.44 X 4.37 MM	1.46 CARAT
Carat Weight	VS 2
Color Grade	IDEAL
Clarity Grade	59%
Cut Grade	60%
Depth	Medium (Faceted)
Table	
Girdle	

Pointed	EXCELLENT	EXCELLENT	NONE
Culet			
Polish			
Symmetry			
Fluorescence			

Comments:
This Laboratory Grown Diamond was
created by Chemical Vapor Deposition
(CVD) growth process.