



**INTERNATIONAL  
GEMOLOGICAL  
INSTITUTE**

**ELECTRONIC COPY**

## LABORATORY GROWN DIAMOND REPORT

|                         |                          |
|-------------------------|--------------------------|
| February 19, 2025       |                          |
| IGI Report Number       | LG680505536              |
| Description             | LABORATORY GROWN DIAMOND |
| Shape and Cutting Style | ROUND BRILLIANT          |
| Measurements            | 7.32 - 7.37 X 4.52 MM    |

## GRADING RESULTS

|               |            |
|---------------|------------|
| Carat Weight  | 1.52 CARAT |
| Color Grade   | D          |
| Clarity Grade | VVS 1      |
| Cut Grade     | IDEAL      |

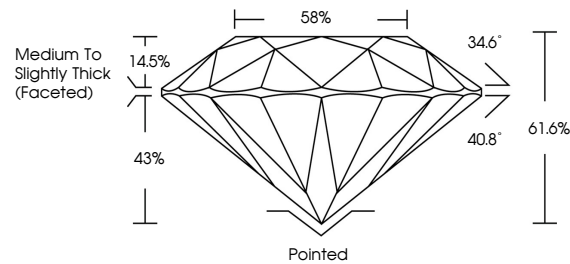
### ADDITIONAL GRADING INFORMATION

|                |                                                                                                 |
|----------------|-------------------------------------------------------------------------------------------------|
| Polish         | EXCELLENT                                                                                       |
| Symmetry       | EXCELLENT                                                                                       |
| Fluorescence   | NONE                                                                                            |
| Inscription(s) |  LG680505536 |

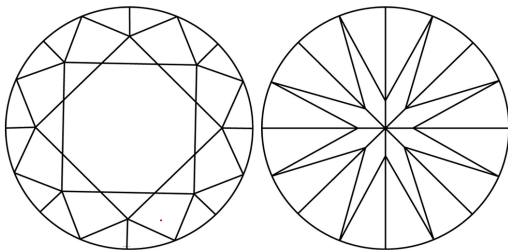
Comments: This Laboratory Grown Diamond was created by Chemical Vapor Deposition (CVD) growth process.  
Type IIa

LG680505536  
Report verification at [igi.org](https://igi.org)

## PROPORTIONS

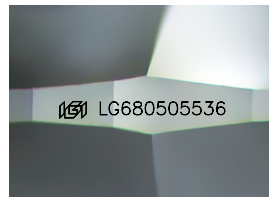


## CLARITY CHARACTERISTICS



## KEY TO SYMBOLS

Red symbols indicate internal characteristics.  
Green symbols indicate external characteristics.



Sample Image Used

## COLOR

D E F G H I J Faint Very Light Light

## CLARITY

IF                      WS<sup>1-2</sup>                      VS<sup>1-2</sup>                      SI<sup>1-2</sup>                      I<sup>1-3</sup>

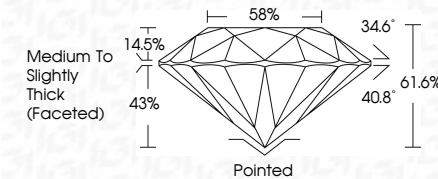
|                        |                                |                           |                      |          |
|------------------------|--------------------------------|---------------------------|----------------------|----------|
| Internally<br>Flawless | Very Very<br>Slightly Included | Very<br>Slightly Included | Slightly<br>Included | Included |
|------------------------|--------------------------------|---------------------------|----------------------|----------|



|                         |                          |
|-------------------------|--------------------------|
| February 19, 2025       |                          |
| IGI Report Number       | LG680505536              |
| Description             | LABORATORY GROWN DIAMOND |
| Shape and Cutting Style | ROUND BRILLIANT          |
| Measurements            | 7.32 - 7.37 X 4.52 MM    |

## GRADING RESULTS

|               |            |
|---------------|------------|
| Carat Weight  | 1.52 CARAT |
| Color Grade   | D          |
| Clarity Grade | VVS 1      |
| Cut Grade     | IDEAL      |



### ADDITIONAL GRADING INFORMATION

|                                                                                                                               |                                                                                                 |
|-------------------------------------------------------------------------------------------------------------------------------|-------------------------------------------------------------------------------------------------|
| Polish                                                                                                                        | EXCELLENT                                                                                       |
| Symmetry                                                                                                                      | EXCELLENT                                                                                       |
| Fluorescence                                                                                                                  | NONE                                                                                            |
| Inscription(s)                                                                                                                |  LG680505536 |
| <p>Comments: This Laboratory Grown Diamond was created by Chemical Vapor Deposition (CVD) growth process.</p> <p>Type IIa</p> |                                                                                                 |



IG



© IGI 2020, International Gemological Institute

FD - 10 20

**www.igi.org**

THIS DOCUMENT WAS PRODUCED WITH THE FOLLOWING SECURITY MEASURES: SPECIAL DOCUMENT PAPER, INK SCREENS, WATERMARK, BACKGROUND DESIGNS, HOLOGRAM AND OTHER SECURITY FEATURES NOT LISTED AND DO EXCEED DOCUMENT SECURITY INDUSTRY GUIDELINES

February 19, 2025  
IGI Report No LG-80505536  
ROUND BRILLIANT

|                       |                                    |       |
|-----------------------|------------------------------------|-------|
| 7.32 - 7.37 X 4.62 MM | 1.52 CARAT                         | D     |
| Carat Weight          | VVS 1                              | IDEAL |
| Color Grade           | 61.6%                              | 59%   |
| Clarity Grade         | Medium to slightly Thick (faceted) |       |
| Cut Grade             | Pointed                            |       |
| Depth                 | EXCELLENT                          |       |
| Table                 | EXCELLENT                          |       |
| Girdle                | NONE                               |       |
| Culet                 | 4mm x 1mm                          |       |
| Polish                | Symmetry                           |       |
| Fluorescence          | Fluorescence                       |       |

**Comments:**  
This Laboratory Grown Diamond was created by Chemical Vapor Deposition (CVD) growth process, type IIa