

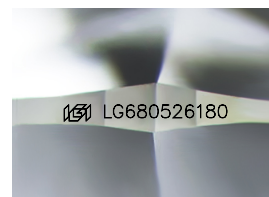
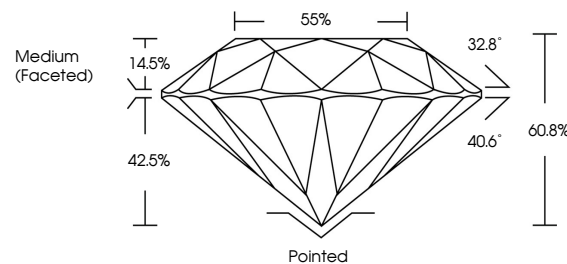


**ELECTRONIC COPY**

## LABORATORY GROWN DIAMOND REPORT

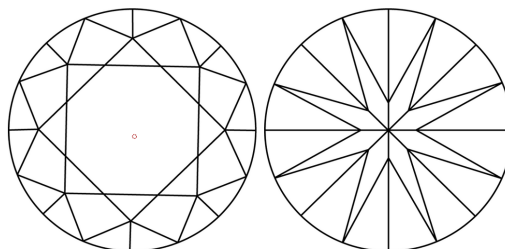
LG680526180  
Report verification at [lgi.org](https://lgi.org)

## PROPORTIONS



Sample Image Used

## CLARITY CHARACTERISTICS



## KEY TO SYMBOLS

Red symbols indicate internal characteristics.  
Green symbols indicate external characteristics.

## COLOR

D E F G H I J Faint Very Light Light

## CLARITY

IF                      WS<sup>1-2</sup>                      VS<sup>1-2</sup>                      SI<sup>1-2</sup>                      I<sup>1-3</sup>

Internally Flawless	Very Very Slightly Included	Very Slightly Included	Slightly Included	Included
------------------------	--------------------------------	---------------------------	----------------------	----------

## LABORATORY GROWN DIAMOND REPORT



March 4, 2025

IGI Report Number **LG680526180**

Description	LABORATORY GROWN DIAMOND
-------------	--------------------------

Shape and Cutting Style **ROUND BRILLIANT**

Measurements	8.14 - 8.17 X 4.96 MM
--------------	-----------------------

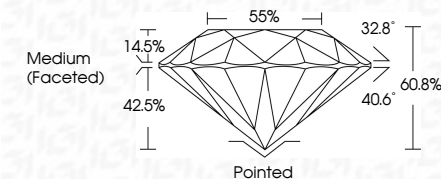
## GRADING RESULTS

Carat Weight **2.00 CARATS**

Color Grade	D
-------------	---

Clarity Grade **VVS 1**

Cut Grade **IDEAL**



### ADDITIONAL GRADING INFORMATION

Polish **EXCELLENT**Symmetry **EXCELLENT**Fluorescence **NONE**Inscription(s)  LG680526180

Comments: As Grown - No indication of post-growth treatment.

This Laboratory Grown Diamond was created by High Pressure High Temperature (HPHT) growth process.  
Type II



© IGI 2020, International Gemological Institute

FD - 10 20



THIS DOCUMENT WAS PRODUCED WITH THE FOLLOWING SECURITY MEASURES: SPECIAL DOCUMENT PAPER, INK SCREENS, WATERMARK, BACKGROUND DESIGNS, HOLOGRAM AND OTHER SECURITY FEATURES NOT LISTED AND DO EXCEED DOCUMENT SECURITY INDUSTRY GUIDELINES

**www.igi.org**

March 4, 2026	GI Report No. LG490526180	2.00 CARATS	D	VVS 1	Painted	Comments: As seen - No indication of post-growth treatment. This Laboratory Grown Diamond was created by High Pressure High Temperature (HPHT) growth process.
ROUND BRILLIANT				IDEAL	EXCELLENT	
				60.8%	EXCELLENT	
				85%	NONE	
				Medium (Faceted)	## LG490526180	
	Carat Weight		Color Grade	Clarity Grade	Cut Grade	
				Depth	Table	
				Girdle		
					Culet	
					Polish	
					Symmetry	
					Fluorescence	