



## LABORATORY GROWN DIAMOND REPORT

February 7, 2025	
IGI Report Number	LG681546836
Description	LABORATORY GROWN DIAMOND
Shape and Cutting Style	ROUND BRILLIANT
Measurements	10.04 - 10.09 x 6.11 mm

## GRADING RESULTS

Carat Weight	3.75 CARATS
Color Grade	D
Clarity Grade	VVS 2
Cut Grade	IDEAL

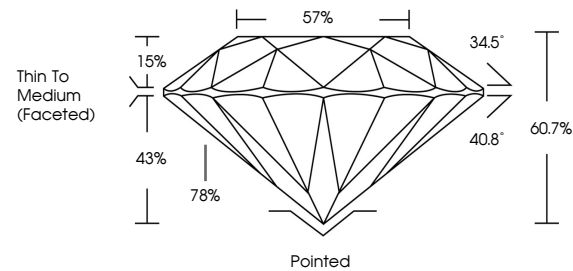
### ADDITIONAL GRADING INFORMATION

Polish	EXCELLENT
Symmetry	EXCELLENT
Fluorescence	NONE
Inscription(s)	 LG681546836

Comments: HEARTS & ARROWS  
This Laboratory Grown Diamond was created by  
Chemical Vapor Deposition (CVD) growth process.  
Type IIa

LG681546836  
Report verification at [igi.org](https://www.igi.org)

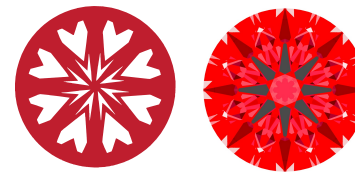
## PROPORTIONS



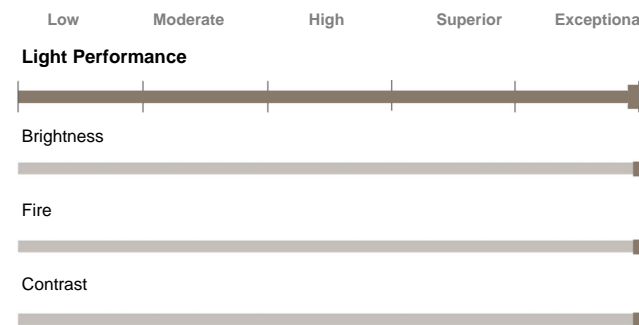
Sample Image Used

## LIGHT PERFORMANCE REPORT

**Light Performance Grade: Exceptional**



### Ideal-Scope representation

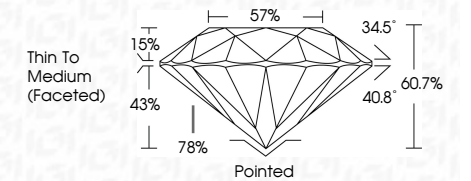
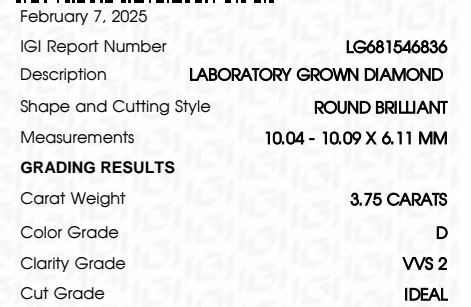


**COLOR**

D E F G H I J      Faint      Very Light      Light

## CLARITY

IF	VVS <sup>1-2</sup>	VS <sup>1-2</sup>	SI <sup>1-2</sup>	I <sup>1-3</sup>
Internally Flawless	Very Very Slightly Included	Very Slightly Included	Slightly Included	Included



### ADDITIONAL GRADING INFORMATION

Polish	EXCELLENT
Symmetry	EXCELLENT
Fluorescence	NONE
Inscription(s)	1631 LG681546836

Comments: HEARTS & ARROWS  
This Laboratory Grown Diamond was created by  
Chemical Vapor Deposition (CVD) growth process.  
Type IIa



© IGI 2020, International Gemological Institute

FD - 10 20



February 7, 2025  
IGI Report No LG681546836  
ROUND BRILLIANT

10.04 - 10.09 X 0.11 MM	3.75 CARATS	D
Color Grade	VVS 2	Polished
Clarity Grade	IDEAL	EXCELLENT
Cut Grade	60.7%	EXCELLENT
Depth	57%	NONE
Table	Thin To Medium	None
Grade	(faceted)	inscription(s)
Culet		
Poin		
Symmetry		
Fluorescence		
Inscription(s)		

**Comments:**  
HEARTS & ARROWS  
This Laboratory Grown Diamond was  
created by Chemical Vapor Deposition  
(CVD) growth process.  
Type IIa