



ELECTRONIC COPY

LABORATORY GROWN DIAMOND REPORT

| | |
|-------------------------|--------------------------|
| February 11, 2025 | |
| IGI Report Number | LG681557208 |
| Description | LABORATORY GROWN DIAMOND |
| Shape and Cutting Style | ROUND BRILLIANT |
| Measurements | 6.94 - 7.00 X 4.31 MM |

GRADING RESULTS

| | |
|---------------|------------|
| Carat Weight | 1.30 CARAT |
| Color Grade | D |
| Clarity Grade | VVS 2 |
| Cut Grade | IDEAL |

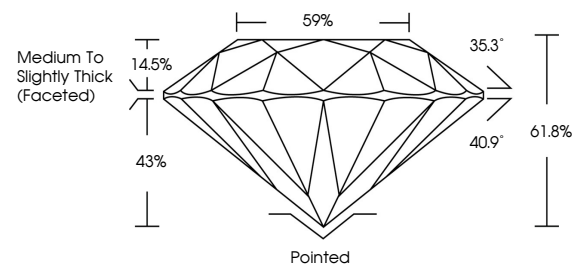
ADDITIONAL GRADING INFORMATION

| | |
|----------------|----------------|
| Polish | EXCELLENT |
| Symmetry | EXCELLENT |
| Fluorescence | NONE |
| Inscription(s) | 15 LG681557208 |

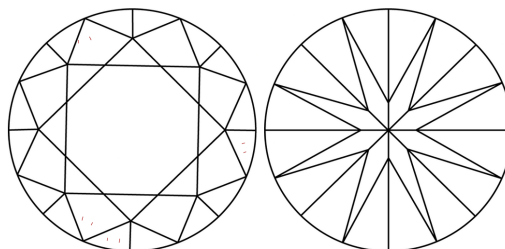
Comments: As Grown - No indication of post-growth treatment.
This Laboratory Grown Diamond was created by High Pressure High Temperature (HPHT) growth process.
Type II

LG681557208
Report verification at igi.org

PROPORTIONS

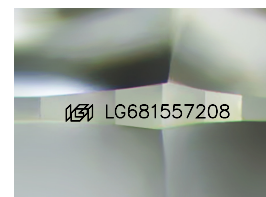


CLARITY CHARACTERISTICS



KEY TO SYMBOLS

Red symbols indicate internal characteristics.
Green symbols indicate external characteristics.



Sample Image Used

COLOR

D E F G H I J Faint Very Light Light

CLARITY

IF WS¹⁻² VS¹⁻² SI¹⁻² |¹⁻³

| Internally Flawless | Very Very Slightly Included | Very Slightly Included | Slightly Included | Included |
|------------------------|--------------------------------|---------------------------|----------------------|----------|
|------------------------|--------------------------------|---------------------------|----------------------|----------|

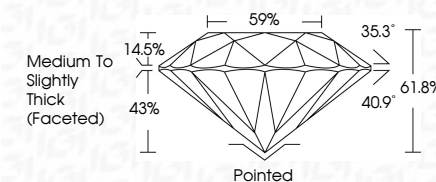
LABORATORY GROWN DIAMOND REPORT



| | |
|-------------------------|--------------------------|
| February 11, 2025 | |
| IGI Report Number | LG681557208 |
| Description | LABORATORY GROWN DIAMOND |
| Shape and Cutting Style | ROUND BRILLIANT |
| Measurements | 6.94 - 7.00 X 4.31 MM |

GRADING RESULTS

| | |
|---------------|------------|
| Carat Weight | 1.30 CARAT |
| Color Grade | D |
| Clarity Grade | VVS 2 |
| Cut Grade | IDEAL |



ADDITIONAL GRADING INFORMATION

| | |
|--|---|
| Polish | EXCELLENT |
| Symmetry | EXCELLENT |
| Fluorescence | NONE |
| Inscription(s) |  LG681557208 |
| Comments: As Grown - No indication of post-growth treatment. | |
| This Laboratory Grown Diamond was created by High Pressure High Temperature (HPHT) growth process. | |
| Type II | |



© IGI 2020, International Gemological Institute

FD - 10 20



THIS DOCUMENT WAS PRODUCED WITH THE FOLLOWING SECURITY MEASURES: SPECIAL DOCUMENT PAPER, INK SCREENS, WATERMARK, BACKGROUND DESIGNS, HOLOGRAM AND OTHER SECURITY FEATURES NOT LISTED AND DO EXCEED DOCUMENT SECURITY INDUSTRY GUIDELINE

www.igi.org

| | | | | | |
|------------------------|------------------------|-------------|-----------------|----------------------------------|------------|
| February 11, 2025 | Carat Weight | Color Grade | Clarity Grade | VS 2 | 1.30 CARAT |
| Report No G560 1557208 | \$594 - 7.00 X 4.31 MM | | Cut Grade | IDEAL | |
| ROUND BRILLIANT | | | Depth | 61.8% | |
| | | | Table | 57% | |
| | | | Girdle | Medium to slightly thick faceted | |
| | | | Culet | Polished | |
| | | | Polish | EXCELLENT | |
| | | | Symmetry | EXCELLENT | |
| | | | Fluorescence | NONE | |
| | | | Inscriptions(s) | g60 LG681557208 | |

Comments: No growth - No indication of post-growth
This Laboratory Growth Diamond was created by High Pressure High Temperature (HPHT) growth process.