

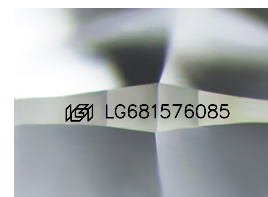
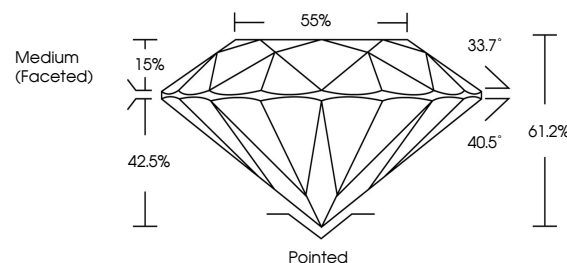


ELECTRONIC COPY

LABORATORY GROWN DIAMOND REPORT

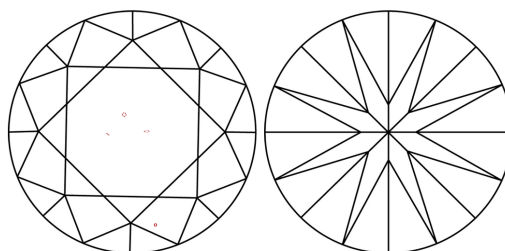
LG681576085
Report verification at igi.org

PROPORTIONS



Sample Image Used

CLARITY CHARACTERISTICS



KEY TO SYMBOLS

Red symbols indicate internal characteristics.
Green symbols indicate external characteristics.

COLOR

D E F G H I J Faint Very Light Light

CLARITY

IF WS¹⁻² VS¹⁻² SI¹⁻² |¹⁻³

Internally Flawless	Very Very Slightly Included	Very Slightly Included	Slightly Included	Included
------------------------	--------------------------------	---------------------------	----------------------	----------



March 7, 2025

IGI Report Number **LG681576085**Description **LABORATORY GROWN DIAMOND**Shape and Cutting Style **ROUND BRILLIANT**

Measurements	10.98 - 11.04 X 6.74 MM
--------------	-------------------------

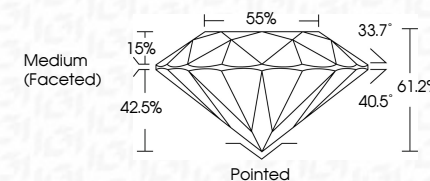
GRADING RESULTS

Carat Weight **5.02 CARATS**

Color Grade

Clarity Grade VS 1

Cut Grade **IDEAL**



ADDITIONAL GRADING INFORMATION

Polish **EXCELLENT**Symmetry **EXCELLENT**Fluorescence **NONE**Inscription(s) LG681576085

Comments: This Laboratory Grown Diamond was created by Chemical Vapor Deposition (CVD) growth process.
Type IIa



© IGI 2020, International Gemological Institute

FD - 10 20



THIS DOCUMENT WAS PRODUCED WITH THE FOLLOWING SECURITY MEASURES: SPECIAL DOCUMENT PAPER, INK SCREENS, WATERMARK, BACKGROUND DESIGNS, HOLOGRAM AND OTHER SECURITY FEATURES NOT LISTED AND DO EXCEED DOCUMENT SECURITY INDUSTRY GUIDELINES

www.igi.org

March 7, 2025	GI Report No. LG58157085		
ROUND BRILLIANT			
10.08 - 11.04 X 6.74 MM			
Carat Weight	5.02 CARATS		
Color Grade	F		
Clarity Grade	VS 1		
Cut Grade	IDEAL		
Depth	61.2%		
Table	55%		
Girdle	Medium (Faced)		
Culet	Pointed		
Polish	EXCELLENT		
Symmetry	EXCELLENT		
Fluorescence	NONE		
Inscriptions(s)	lg58157085		
Comments:	This Laboratory Grown Diamond was created by Chemical Vapor Deposition (CVD) growth process.		
Type IIA			