

INTERNATIONAL
GEMOLOGICAL
INSTITUTE

ELECTRONIC COPY

LABORATORY GROWN DIAMOND REPORT

February 8, 2025

IGI Report Number

Description

Shape and Cutting Style

Measurements

LG681585303

LABORATORY GROWN DIAMOND

ROUND BRILLIANT

9.88 - 9.91 x 6.01 mm

GRADING RESULTS

Carat Weight

Color Grade

Clarity Grade

Cut Grade

3.56 CARATS

D

VVS 2

IDEAL

ADDITIONAL GRADING INFORMATION

Polish

Symmetry

Fluorescence

Inscription(s)

Comments: HEARTS & ARROWS

This Laboratory Grown Diamond was created by Chemical Vapor Deposition (CVD) growth process. Type IIa

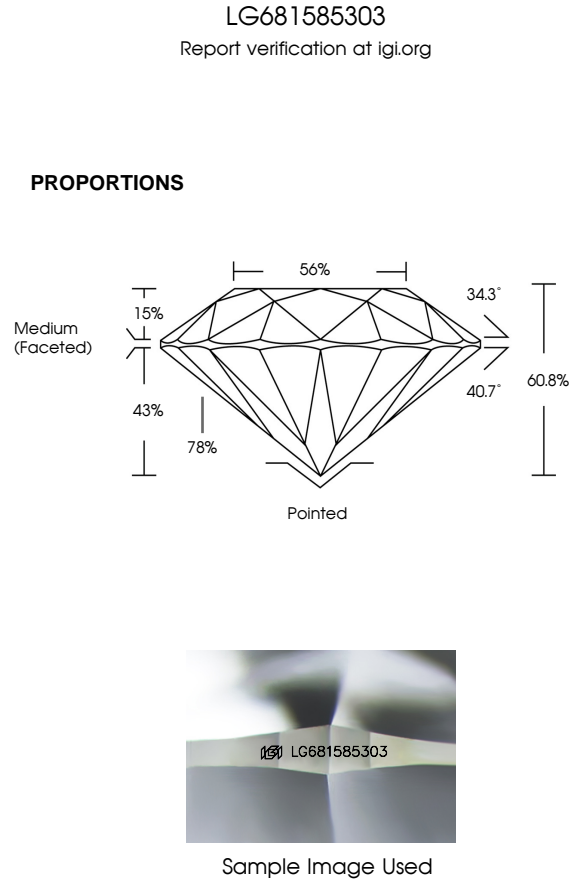
EXCELLENT

EXCELLENT

NONE

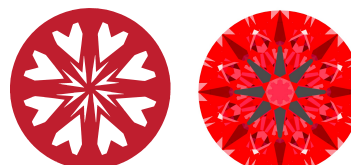
IGI LG681585303

IGI LG681585303



LIGHT PERFORMANCE REPORT

Light Performance Grade: **Exceptional**



Ideal-Scope representation

Low

Moderate

High

Superior

Exceptional

Light Performance

Brightness

Fire

Contrast

COLOR

D

E

F

G

H

I

J

Faint

Very Light

Light

CLARITY

IF

VVS 1 - 2

VS 1 - 2

SI 1 - 2

I 1 - 3

Internally Flawless

Very Very Slightly Included



Very Slightly Included


Slightly Included

Included

© IGI 2020, International Gemological Institute

FD - 10 20





February 8, 2025

IGI Report Number

Description

Shape and Cutting Style

Measurements

GRADING RESULTS

Carat Weight

Color Grade

Clarity Grade

Cut Grade

LG681585303

LABORATORY GROWN DIAMOND

ROUND BRILLIANT

9.88 - 9.91 X 6.01 MM

3.56 CARATS

D

VVS 2

IDEAL

ADDITIONAL GRADING INFORMATION

Polish

Symmetry

Fluorescence

Inscription(s)

Comments: HEARTS & ARROWS

This Laboratory Grown Diamond was created by Chemical Vapor Deposition (CVD) growth process. Type IIa

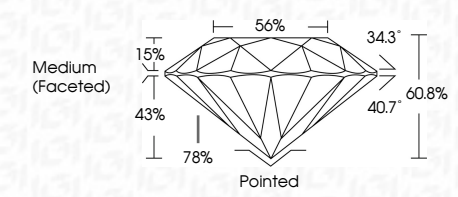
EXCELLENT

EXCELLENT

NONE


IGI LG681585303

IGI LG681585303



Medium (Faceted)

Pointed



IGI

February 8, 2025

IGI Report No LG681585303

ROUND BRILLIANT

9.88 - 9.91 X 6.01 MM

Carat Weight

Color Grade

Clarity Grade

Cut Grade

Depth

Table

Grade

3.56 CARATS

D

VVS 2

IDEAL

60.8%

56%

Medium (Faceted)

Pointed

EXCELLENT

EXCELLENT

NONE

IGI LG681585303

Comments: HEARTS & ARROWS

This Laboratory Grown Diamond was created by Chemical Vapor Deposition (CVD) growth process. Type IIa