



**ELECTRONIC COPY**

LG681598055  
Report verification at igi.org



February 16, 2025

IGI Report Number **LG681598055**

Description **LABORATORY GROWN DIAMOND**

Shape and Cutting Style **ROUND BRILLIANT**

Measurements **6.29 - 6.31 X 3.88 MM**

**GRADING RESULTS**

Carat Weight **0.94 CARAT**

Color Grade **D**

Clarity Grade **VVS 2**

Cut Grade **IDEAL**

February 16, 2025  
IGI Report Number **LG681598055**  
Description **LABORATORY GROWN DIAMOND**  
Shape and Cutting Style **ROUND BRILLIANT**  
Measurements **6.29 - 6.31 X 3.88 MM**

**GRADING RESULTS**

Carat Weight **0.94 CARAT**

Color Grade **D**

Clarity Grade **VVS 2**

Cut Grade **IDEAL**

**ADDITIONAL GRADING INFORMATION**

Polish **EXCELLENT**

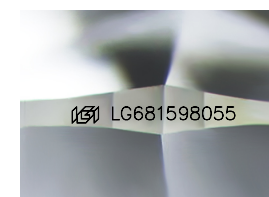
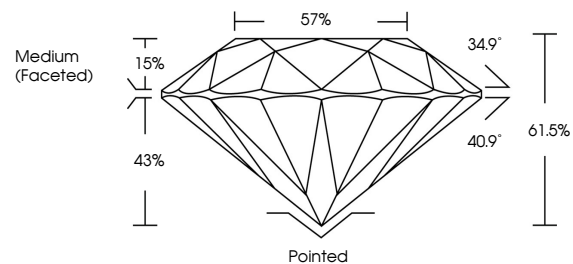
Symmetry **EXCELLENT**

Fluorescence **NONE**

Inscription(s) **LG681598055**

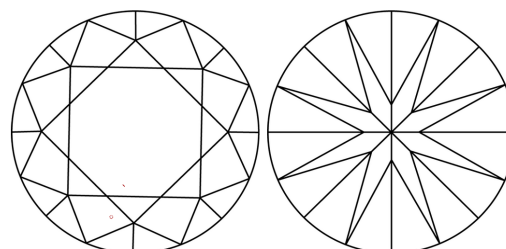
Comments: This Laboratory Grown Diamond was created by Chemical Vapor Deposition (CVD) growth process.  
Type IIa

**PROPORTIONS**



Sample Image Used

**CLARITY CHARACTERISTICS**



**KEY TO SYMBOLS**

Red symbols indicate internal characteristics.  
Green symbols indicate external characteristics.

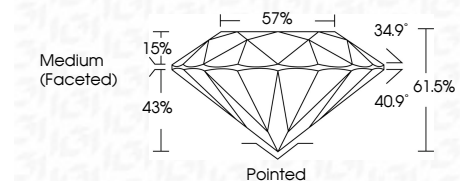
**COLOR**

D E F G H I J Faint Very Light Light

**CLARITY**

IF WS<sup>1-2</sup> VS<sup>1-2</sup> SI<sup>1-2</sup> I<sup>1-3</sup>

Internally Flawless Very Very Slightly Included Very Slightly Included Slightly Included Included



**ADDITIONAL GRADING INFORMATION**

Polish **EXCELLENT**

Symmetry **EXCELLENT**

Fluorescence **NONE**

Inscription(s) **LG681598055**

Comments: This Laboratory Grown Diamond was created by Chemical Vapor Deposition (CVD) growth process.  
Type IIa



**IGI**



February 16, 2025	IGI Report No LG681598055	0.94 CARAT	D	Pointed	EXCELLENT
ROUND BRILLIANT	6.29 - 6.31 X 3.88 MM	VVS 2	IDEAL	EXCELLENT	EXCELLENT
Color Grade	Clarity Grade	Cut Grade	Depth	Table	Girdle
D	VVS 2	IDEAL	61.5%	57%	Medium (Faceted)
Polish	Symmetry	Fluorescence	Inscription(s)		
EXCELLENT	EXCELLENT	NONE	LG681598055		
Comments: This Laboratory Grown Diamond was created by Chemical Vapor Deposition (CVD) growth process. Type IIa					