

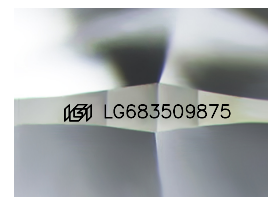
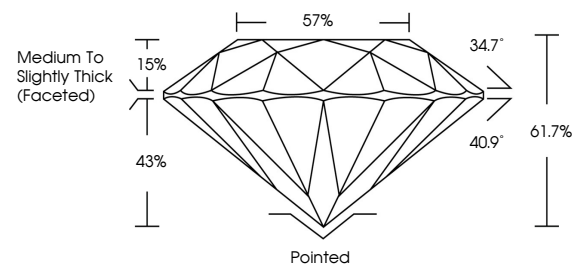


ELECTRONIC COPY

LABORATORY GROWN DIAMOND REPORT

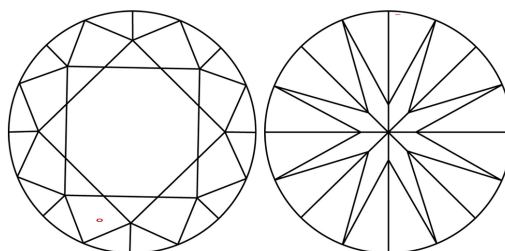
LG683509875
Report verification at igi.org

PROPORTIONS



Sample Image Used

CLARITY CHARACTERISTICS



KEY TO SYMBOLS

Red symbols indicate internal characteristics.
Green symbols indicate external characteristics.



www.igi.org

LABORATORY GROWN DIAMOND REPORT



February 11, 2025

IGI Report Number LG683509875

Description **LABORATORY GROWN DIAMOND**Shape and Cutting Style **ROUND BRILLIANT**

Measurements	8.72 - 8.76 X 5.40 MM
--------------	-----------------------

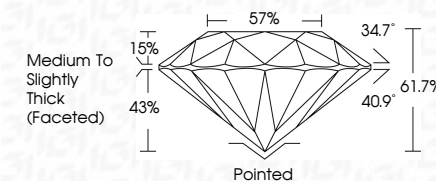
GRADING RESULTS

Carat Weight **2.55 CARATS**

Color Grade E

Clarity Grade VS 1

Cut Grade **IDEAL**



ADDITIONAL GRADING INFORMATION

Polish EXCELLENT

Symmetry **EXCELLENT**Fluorescence **NONE**Inscription(s) LG683509875

Comments: HEARTS & ARROWS

This Laboratory Grown Diamond was created by Chemical Vapor Deposition (CVD) growth process.
Type IIa



February 11, 2025	
GJ Report No LG6859975	
ROUND BRILLIANT	
WT= 0.72 - X 5.40 MM	
Carat Weight	2.55 CARATS
Color Grade	E
Clarity Grade	VS 1
Cut Grade	IDEAL
Depth	61.7%
Table	57%
Girdle	Medium to Slightly Thick (focused)
Culet	Pointed
Polish	EXCELLENT
Symmetry	EXCELLENT
Fluorescence	NONE
Inscriptions(s)	#GJL56859975
Comments:	
CONCLUSIONS	
This Laboratory Grown Diamond was created by Chemical Vapor Deposition (CVD) growth process.	
Type IIA	

© IGI 2020, International Gemological Institute

FD - 10 20



THIS DOCUMENT WAS PRODUCED WITH THE FOLLOWING SECURITY MEASURES: SPECIAL DOCUMENT PAPER, INK SCREENS, WATERMARK, BACKGROUND DESIGNS, HOLOGRAM, AND OTHER SECURITY FEATURES NOT LISTED AND DO EXCEED DOCUMENT SECURITY INDUSTRY GUIDELINES.