

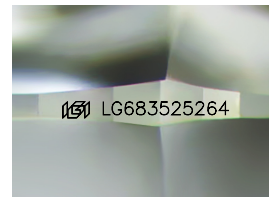
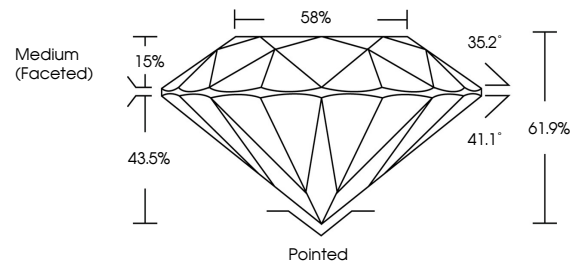


**INTERNATIONAL
GEMOLOGICAL
INSTITUTE**

ELECTRONIC COPY

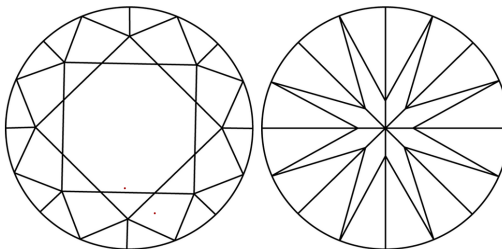
LG683525264
Report verification at igi.org

PROPORTIONS



Sample Image Used

CLARITY CHARACTERISTICS



KEY TO SYMBOLS

Red symbols indicate internal characteristics.
Green symbols indicate external characteristics.

COLOR

D E F G H I J Faint Very Light Light

CLARITY

IF WS¹⁻² VS¹⁻² SI¹⁻² |¹⁻³

Internally Flawless	Very Very Slightly Included	Very Slightly Included	Slightly Included	Included
------------------------	--------------------------------	---------------------------	----------------------	----------



February 12, 2025

IGI Report Number **LG683525264**

Description	LABORATORY GROWN DIAMOND
-------------	--------------------------

Shape and Cutting Style **ROUND BRILLIANT**

Measurements	6.55 - 6.57 X 4.06 MM
--------------	-----------------------

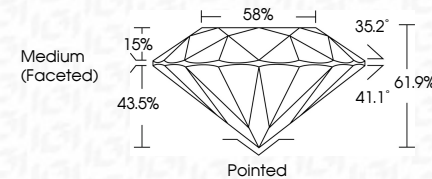
GRADING RESULTS

Carat Weight 1.06 CARAT

Color Grade **D**

Clarity Grade **VVS 2**

Cut Grade **IDEAL**



ADDITIONAL GRADING INFORMATION

Polish **EXCELLENT**Symmetry **EXCELLENT**Fluorescence **NONE**Inscription(s) LG68352526

Comments: This Laboratory Grown Diamond was created by Chemical Vapor Deposition (CVD) growth process.
Type IIa



IG



© IGI 2020, International Gemological Institute

FD - 10 20

www.igi.org

THIS DOCUMENT WAS PRODUCED WITH THE FOLLOWING SECURITY MEASURES: SPECIAL DOCUMENT PAPER, INK SCREENS, WATERMARK, PERMANENT INK, AND SPECIAL INK. ALL OTHER SECURITY FEATURES ARE NOT APPLICABLE. ALL INFORMATION IS CLASSIFIED AS UNCLASSIFIED.

February 12, 2025
IGI Report No LG683525264
ROUND BRILLIANT

6.55 - 6.57 X 4.06 MM	
Carat Weight	1.06 CARAT
Color Grade	D
Clarity Grade	VS 2
Cut Grade	IDEAL
Depth	61.9%
Table	58%
Grille	Medium (Faceted)

	Pointed
Culet	EXCELLENT
Polish	EXCELLENT
Symmetry	NONE
Fluorescence	40% I G 93 F 0 4 4

Comments:
This Laboratory Grown Diamond was created by Chemical Vapor Deposition (CVD) growth process.
Type IIa