



**ELECTRONIC COPY**

## LABORATORY GROWN DIAMOND REPORT

February 19, 2025	
IGI Report Number	LG683526043
Description	LABORATORY GROWN DIAMOND
Shape and Cutting Style	ROUND BRILLIANT
Measurements	7.19 - 7.24 X 4.39 MM

## GRADING RESULTS

Carat Weight	1.40 CARAT
Color Grade	E
Clarity Grade	VS 1
Cut Grade	IDEAL

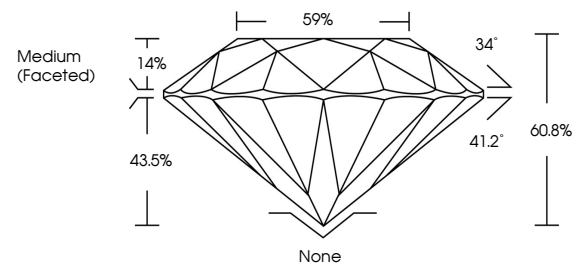
### ADDITIONAL GRADING INFORMATION

Polish	EXCELLENT
Symmetry	EXCELLENT
Fluorescence	NONE
Inscription(s)	151 LG683526043

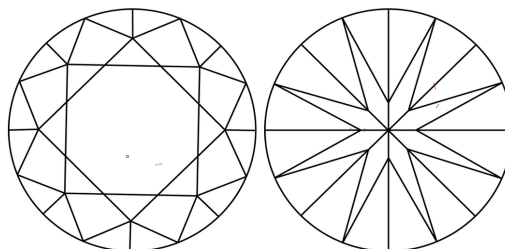
Comments: This Laboratory Grown Diamond was created by Chemical Vapor Deposition (CVD) growth process.  
Type IIa

LG683526043  
Report verification at [lgi.org](https://lgi.org)

## PROPORTIONS

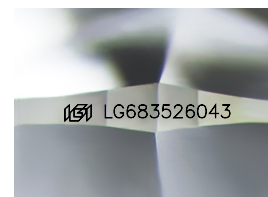


## CLARITY CHARACTERISTICS



### KEY TO SYMBOLS

Red symbols indicate internal characteristics.  
Green symbols indicate external characteristics.



Sample Image Used

## COLOR

D E F G H I J Faint Very Light Light

## CLARITY

IF                      VS<sup>1-2</sup>                      VS<sup>1-2</sup>                      S<sup>1-2</sup>                      |<sup>1-3</sup>

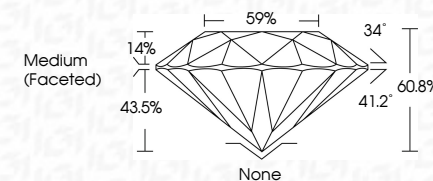
Internally Flawless	Very Very Slightly Included	Very Slightly Included	Slightly Included	Included
------------------------	--------------------------------	---------------------------	----------------------	----------



February 19, 2025	
IGI Report Number	LG683526043
Description	LABORATORY GROWN DIAMOND
Shape and Cutting Style	ROUND BRILLIANT
Measurements	7.19 - 7.24 X 4.39 MM

## GRADING RESULTS

Carat Weight	1.40 CARAT
Color Grade	E
Clarity Grade	VS 1
Cut Grade	IDEAL



### ADDITIONAL GRADING INFORMATION

Polish	EXCELLENT
Symmetry	EXCELLENT
Fluorescence	NONE
Inscription(s)	(15) LG683526043

Comments: This Laboratory Grown Diamond was created by Chemical Vapor Deposition (CVD) growth process.  
Type IIa



© IGI 2020, International Gemological Institute

FD - 10 20



THIS DOCUMENT WAS PRODUCED WITH THE FOLLOWING SECURITY MEASURES: SPECIAL DOCUMENT PAPER, INK SCREENS, WATERMARK, BACKGROUND DESIGNS, HOLOGRAM AND OTHER SECURITY FEATURES NOT LISTED AND DO EXCEED DOCUMENT SECURITY INDUSTRY GUIDELINES

**www.igi.org**

February 19, 2025	1.40 CARAT
IGI Report No. LG583626043	E
ROUND BRILLIANT	
17.19 x 7.24 x 3.39 MM	
Carat Weight	
Color Grade	
Clarity Grade	VS 1
Cut Grade	IDEAL
Depth	60.8%
Table	59%
Girdle	Medium (Faceted)
Culet	None
Polish	EXCELLENT
Symmetry	EXCELLENT
Fluorescence	NONE
Inscriptions(s)	IGI LG583626043
Comments:	
This is a Natural, Fancy Cut, Colorless, Very Slightly Included, Very Good Cut, Round Brilliant Type IIa, IGI Certified, Lab Grown Diamond was created by Chemical Vapor Deposition (CVD) growth process.	
Type IIa	