

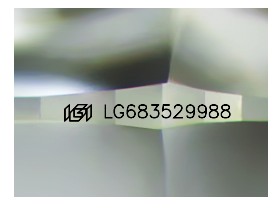
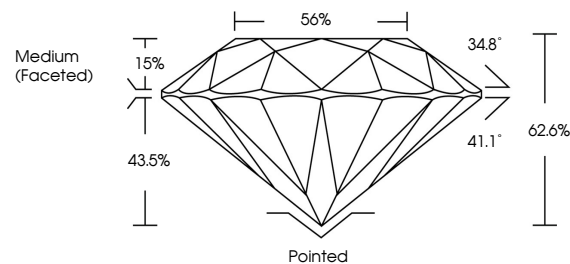


ELECTRONIC COPY

LABORATORY GROWN DIAMOND REPORT

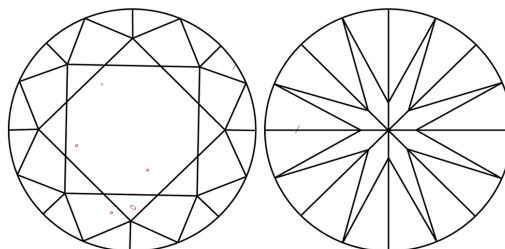
LG683529988
Report verification at igi.org

PROPORTIONS



Sample Image Used

CLARITY CHARACTERISTICS



KEY TO SYMBOLS

Red symbols indicate internal characteristics.
Green symbols indicate external characteristics.

COLOR

D E F G H I J Faint Very Light Light

CLARITY

IF WS¹⁻² VS¹⁻² SI¹⁻² |¹⁻³

Internally Flawless	Very Very Slightly Included	Very Slightly Included	Slightly Included	Included
------------------------	--------------------------------	---------------------------	----------------------	----------



February 20, 2025

IGI Report Number **LG683529988**

Description **LABORATORY GROWN DIAMOND**Shape and Cutting Style **ROUND BRILLIANT**

Measurements 7.21 - 7.26 X 4.53 MM

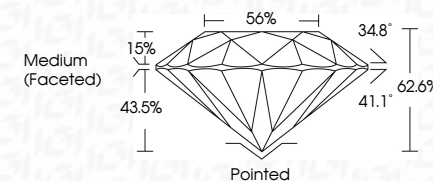
GRADING RESULTS

Carat Weight **1.46 CARAT**

Color Grade E

Clarity Grade VS 2

Cut Grade **EXCELLENT**



ADDITIONAL GRADING INFORMATION

Polish EXCELLENT

Symmetry **EXCELLENT**Fluorescence **NONE**Inscription(s) LG683529988

Comments: This Laboratory Grown Diamond was created by Chemical Vapor Deposition (CVD) growth process.
Type IIa



© IGI 2020, International Gemological Institute

FD - 10 20



THIS DOCUMENT WAS PRODUCED WITH THE FOLLOWING SECURITY MEASURES: SPECIAL DOCUMENT PAPER, INK SCREENS, WATERMARK, BACKGROUND DESIGNS, HOLOGRAM AND OTHER SECURITY FEATURES NOT LISTED AND DO EXCEED DOCUMENT SECURITY INDUSTRY GUIDELINES

www.igi.org

February 20, 2025	1.46 CARAT
Report No. LG63629988	VS 2
ROUND BRILLIANT	EXCELLENT
	62.0%
	55%
	Medium (Faceted)
	Polished
	EXCELLENT
	EXCELLENT
	NONE
	161 LG63629988

Comments:
 This is a Natural Color Diamond was
 analyzed by Chemical Vapor Deposition
 (CVD) growth process.
 Type IIA