

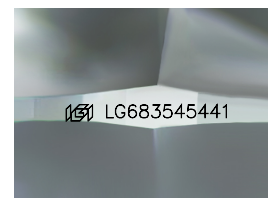
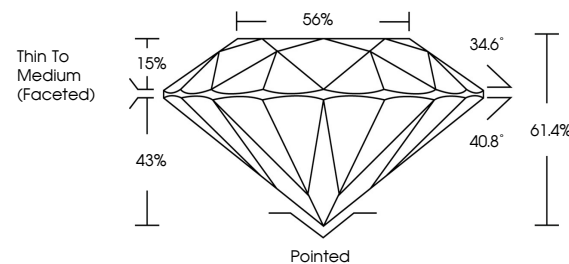


ELECTRONIC COPY

LABORATORY GROWN DIAMOND REPORT

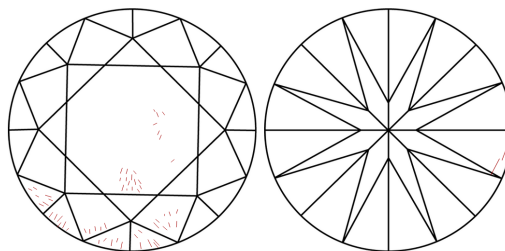
LG683545441
Report verification at igi.org

PROPORTIONS



Sample Image Used

CLARITY CHARACTERISTICS



KEY TO SYMBOLS

Red symbols indicate internal characteristics.
Green symbols indicate external characteristics.

COLOR

D E F G H I J Faint Very Light Light

CLARITY

IF WS¹⁻² VS¹⁻² S¹⁻² |¹⁻³

Internally Flawless	Very Very Slightly Included	Very Slightly Included	Slightly Included	Included
------------------------	--------------------------------	---------------------------	----------------------	----------



© IGI 2020, International Gemological Institute

FD - 10 20

www.igi.org

LABORATORY GROWN DIAMOND REPORT



February 26, 2025

IGI Report Number **LG683545441**Description **LABORATORY GROWN DIAMOND**Shape and Cutting Style **ROUND BRILLIANT**

Measurements 6.48 - 6.51 X 3.99 MM

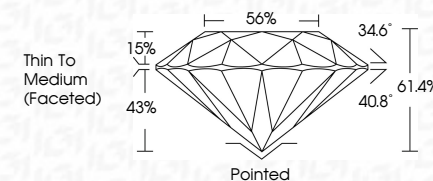
GRADING RESULTS

Carat Weight 1.02 CARAT

Color Grade E

Clarity Grade SI 1

Cut Grade **IDEAL**



ADDITIONAL GRADING INFORMATION

Polish **EXCELLENT**Symmetry **EXCELLENT**Fluorescence **NONE**Inscription(s) LG683545441

Comments: As Grown - No indication of post-growth treatment.

This Laboratory Grown Diamond was created by High Pressure High Temperature (HPHT) growth process.

Type II



February 26, 2025	
GIG Report No. LG58354541	
ROUND BRILLANT	
4.49 - 4.51 X .99 MM	
Carat Weight	1.02 CARAT
Color Grade	E
Clarity Grade	S11
Cut Grade	IDEAL
Depth	61.6%
Table	56%
Girdle	Thin To Medium (Faceted)
Culet	Poined
Polish	EXCELLENT
Symmetry	EXCELLENT
Fluorescence	NONE
Inscription(s)	(GSI) LG58354541

Comments:
As Grown - No indication of post-growth treatment.
The Laboratory Grown Diamond was created by High Pressure High Temperature (HPHT) growth process.