



**ELECTRONIC COPY**

## LABORATORY GROWN DIAMOND REPORT

|                         |                          |
|-------------------------|--------------------------|
| February 14, 2025       |                          |
| IGI Report Number       | LG683547403              |
| Description             | LABORATORY GROWN DIAMOND |
| Shape and Cutting Style | ROUND BRILLIANT          |
| Measurements            | 7.88 - 7.96 X 4.99 MM    |

## GRADING RESULTS

|               |            |
|---------------|------------|
| Carat Weight  | 1.97 CARAT |
| Color Grade   | E          |
| Clarity Grade | VVS 2      |
| Cut Grade     | EXCELLENT  |

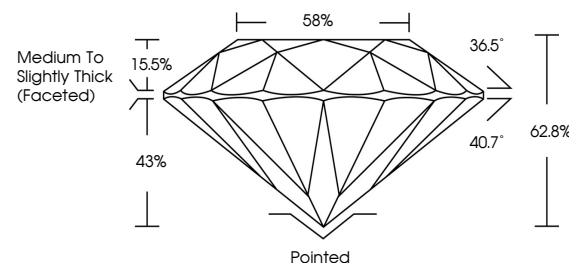
### ADDITIONAL GRADING INFORMATION

|                |                 |
|----------------|-----------------|
| Polish         | EXCELLENT       |
| Symmetry       | EXCELLENT       |
| Fluorescence   | NONE            |
| Inscription(s) | 151 LG683547403 |

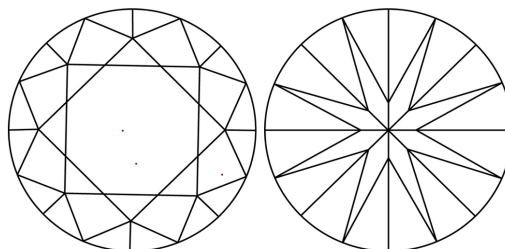
Comments: This Laboratory Grown Diamond was created by Chemical Vapor Deposition (CVD) growth process.  
Type IIa

LG683547403  
Report verification at [lgi.org](https://lgi.org)

## PROPORTIONS

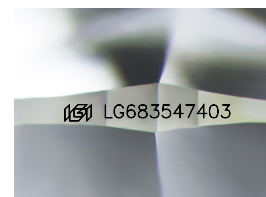


## CLARITY CHARACTERISTICS



### KEY TO SYMBOLS

Red symbols indicate internal characteristics.  
Green symbols indicate external characteristics.



Sample Image Used

COLOR

D E F G H I J Faint Very Light Light

## CLARITY

IF WS<sup>1-2</sup> VS<sup>1-2</sup> SI<sup>1-2</sup> |<sup>1-3</sup>

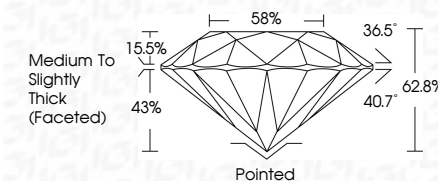
| Internally<br>Flawless | Very Very<br>Slightly Included | Very<br>Slightly Included | Slightly<br>Included | Included |
|------------------------|--------------------------------|---------------------------|----------------------|----------|
|------------------------|--------------------------------|---------------------------|----------------------|----------|



|                         |                          |
|-------------------------|--------------------------|
| February 14, 2025       |                          |
| IGI Report Number       | LG683547403              |
| Description             | LABORATORY GROWN DIAMOND |
| Shape and Cutting Style | ROUND BRILLIANT          |
| Measurements            | 7.88 - 7.96 X 4.99 MM    |

## GRADING RESULTS

|               |            |
|---------------|------------|
| Carat Weight  | 1.97 CARAT |
| Color Grade   | E          |
| Clarity Grade | VVS 2      |
| Cut Grade     | EXCELLENT  |



### ADDITIONAL GRADING INFORMATION

|  |   |
|--|---|
| Polish   | EXCELLENT   |
| Symmetry   | EXCELLENT   |
| Fluorescence   | NONE  |
| Inscription(s)   |  LG683547403 |
| Comments: This Laboratory Grown Diamond was created by Chemical Vapor Deposition (CVD) growth process. |   |
| Type IIa   |   |



© IGI 2020, International Gemological Institute

FD - 10 20



THIS DOCUMENT WAS PRODUCED WITH THE FOLLOWING SECURITY MEASURES: SPECIAL DOCUMENT PAPER, INK SCREENS, WATERMARK, BACKGROUND DESIGNS, HOLOGRAM AND OTHER SECURITY FEATURES NOT LISTED AND DO EXCEED DOCUMENT SECURITY INDUSTRY GUIDELINE

**www.igi.org**

February 14, 2025  
IGI Report No LG683547403  
ROUND BRILLIANT

|                       |                                    |
|-----------------------|------------------------------------|
| 7.88 - 7.96 X 4.99 MM | 1.97 CARAT                         |
| Color Grade           | E                                  |
| Clarity Grade         | VVS 2                              |
| Cut Grade             | EXCELLENT                          |
| Depth                 | 62.8%                              |
| Table                 | 58%                                |
| Girdle                | Medium To Slightly Thick (Faceted) |
| Culet                 | Pointed                            |
| Polish                | EXCELLENT                          |
| Symmetry              | EXCELLENT                          |
| Fluorescence          | NONE                               |

**Comments:**  
This Laboratory Grown Diamond was created by Chemical Vapor Deposition (CVD) growth process.