



ELECTRONIC COPY

LABORATORY GROWN DIAMOND REPORT

| | |
|-------------------------|--------------------------|
| February 18, 2025 | |
| IGI Report Number | LG683553307 |
| Description | LABORATORY GROWN DIAMOND |
| Shape and Cutting Style | ROUND BRILLIANT |
| Measurements | 6.48 - 6.52 X 4.06 MM |

GRADING RESULTS

| | |
|---------------|---------------------|
| Carat Weight | 1.07 CARAT |
| Color Grade | E |
| Clarity Grade | INTERNALLY FLAWLESS |
| Cut Grade | IDEAL |

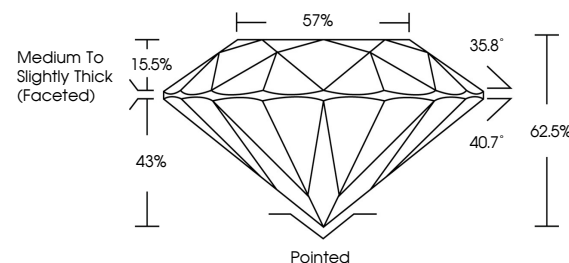
ADDITIONAL GRADING INFORMATION

| | |
|----------------|-----------------|
| Polish | EXCELLENT |
| Symmetry | EXCELLENT |
| Fluorescence | NONE |
| Inscription(s) | 151 LG683553307 |

Comments: As Grown - No indication of post-growth treatment.
This Laboratory Grown Diamond was created by High Pressure High Temperature (HPHT) growth process.
Type II

LG683553307
Report verification at [igi.org](https://www.igi.org)

PROPORTIONS

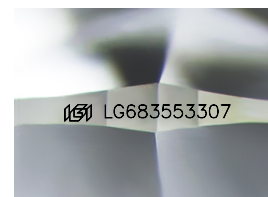


CLARITY CHARACTERISTICS



KEY TO SYMBOLS

Red symbols indicate internal characteristics.
Green symbols indicate external characteristics.



Sample Image Used

COLOR

D E F G H I J Faint Very Light Light

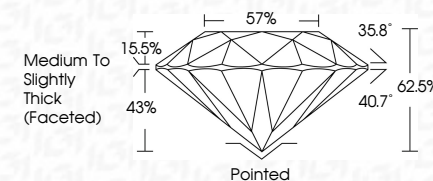
CLARITY

IF WS¹⁻² VS¹⁻² SI¹⁻² |¹⁻³

| | | | | |
|------------------------|--------------------------------|---------------------------|----------------------|----------|
| Internally Flawless | Very Very Slightly Included | Very Slightly Included | Slightly Included | Included |
|------------------------|--------------------------------|---------------------------|----------------------|----------|



| | |
|-------------------------|--------------------------|
| February 18, 2025 | |
| IGI Report Number | LG683553307 |
| Description | LABORATORY GROWN DIAMOND |
| Shape and Cutting Style | ROUND BRILLIANT |
| Measurements | 6.48 - 6.52 X 4.06 MM |
| GRADING RESULTS | |
| Carat Weight | 1.07 CARAT |
| Color Grade | E |
| Clarity Grade | INTERNALLY FLAWLESS |
| Cut Grade | IDEAL |



ADDITIONAL GRADING INFORMATION

| | |
|--|---|
| Polish | EXCELLENT |
| Symmetry | EXCELLENT |
| Fluorescence | NONE |
| Inscription(s) |  LG683553307 |
| Comments: As Grown - No indication of post-growth treatment. | |
| This Laboratory Grown Diamond was created by High Pressure High Temperature (HPHT) growth process. | |
| Type II | |



© IGI 2020, International Gemological Institute

FD - 10 20



THIS DOCUMENT WAS PRODUCED WITH THE FOLLOWING SECURITY MEASURES: SPECIAL DOCUMENT PAPER, INK SCREENS, WATERMARK, BACKGROUND DESIGNS, HOLOGRAM AND OTHER SECURITY FEATURES NOT LISTED AND DO EXCEED DOCUMENT SECURITY INDUSTRY GUIDELINE

www.igi.org

February 18, 2025
ICI Report No LG683553307
ROUND BRILLIANT

| | | |
|----------------------|---------------|------------------------------------|
| 6.48 - 6.52 X .05 MM | Carat Weight | 1.07 CARAT |
| | Color Grade | E |
| | Clarity Grade | IF |
| | Cut Grade | IDEAL |
| | Depth | 62.5% |
| | Table | 57% |
| | Girdle | Medium to Slightly Thick (Faceted) |
| | Culet | Pointed |
| | Polish | EXCELLENT |
| | Symmetry | EXCELLENT |
| | Fluorescence | NONE |

Comments:
As Grown - No indication of post-growth treatment
This Laboratory Grown Diamond was created by High Pressure High Temperature (HPHT) growth process.