

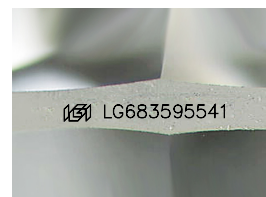
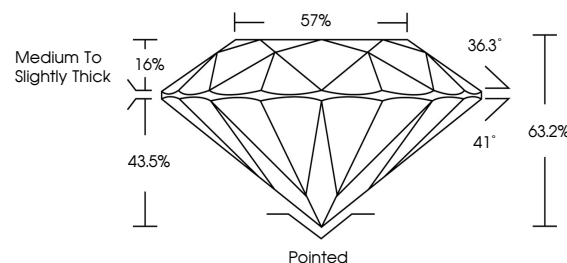


ELECTRONIC COPY

LABORATORY GROWN DIAMOND REPORT

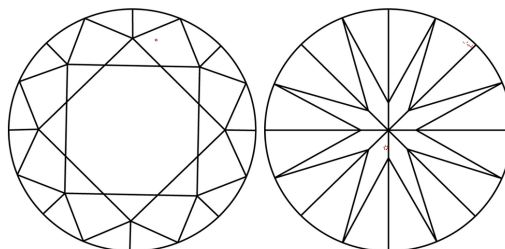
LG683595541
Report verification at iqi.org

PROPORTIONS



Sample Image Used

CLARITY CHARACTERISTICS



KEY TO SYMBOLS

Red symbols indicate internal characteristics.
Green symbols indicate external characteristics.

COLOR

D E F G H I J Faint Very Light Light

CLARITY

IF WS¹⁻² VS¹⁻² SI¹⁻² |¹⁻³

Internally Flawless	Very Very Slightly Included	Very Slightly Included	Slightly Included	Included
------------------------	--------------------------------	---------------------------	----------------------	----------



© IGI 2020, International Gemological Institute

FD - 10 20

www.igi.org

LABORATORY GROWN DIAMOND REPORT



February 24, 2025

IGI Report Number **LG683595541**Description **LABORATORY GROWN DIAMOND**Shape and Cutting Style **ROUND BRILLIANT**

Measurements 8.54 - 8.56 X 5.40 MM

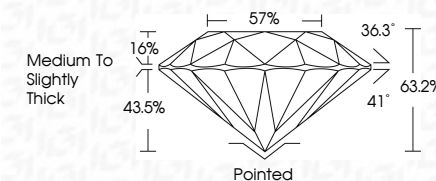
GRADING RESULTS

Carat Weight **2.45 CARATS**

Color Grade F

Clarity Grade VS 1

Cut Grade **EXCELLENT**



ADDITIONAL GRADING INFORMATION

Polish VERY GOOD

Symmetry **EXCELLENT**Fluorescence **NONE**Inscription(s) LG683595541

Comments: This Laboratory Grown Diamond was created by Chemical Vapor Deposition (CVD) growth process.
Type IIa



February 24, 2025	2.45 CARATS		VS 1	Printed	Comments: This Laboratory Grown Diamond was created by Chemical Vapor Deposition (CVD) growth process. Type IIa
GI Report No. LG48395641			EXCELLENT	VERY GOOD	
ROUND BRILLIANT			63.2%	EXCELLENT	
6.54 - 6.55 X 5.40 MM			57%	NONE	
Carat Weight			Medium to Slightly Thick	1601 LG48395641	
Color Grade					
Clarity Grade					
Cut Grade					
Depth					
Table					
Girdle					
Culet					
Pavil					
Symmetry					
Fluorescence					
Inclusions(s)					