



**INTERNATIONAL  
GEMOLOGICAL  
INSTITUTE**

**ELECTRONIC COPY**

LG684513612  
Report verification at [igi.org](https://www.igi.org)

LABORATORY GROWN DIAMOND REPORT



February 21, 2025

IGI Report Number **LG684513612**

Description	LABORATORY GROWN DIAMOND
-------------	--------------------------

Shape and Cutting Style **PEAR BRILLIANT**

Measurements 11.73 X 6.85 X 4.24 MM

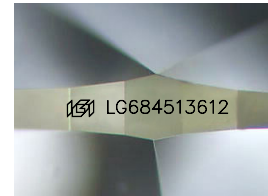
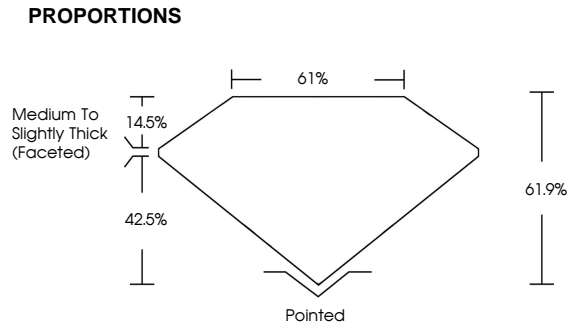
## GRADING RESULTS

Carat Weight **2.00 CARATS**

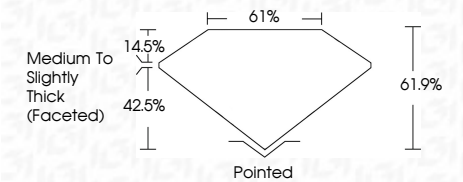
Color Grade	E
-------------	---

Clarity Grade VS 1

Cut Grade **EXCELLENT**



Sample Image Used



## COLOR

D E F G H I J Faint Very Light Light

## CLARITY

IF                      WS<sup>1-2</sup>                      VS<sup>1-2</sup>                      SI<sup>1-2</sup>                      I<sup>1-3</sup>

Internally Flawless	Very Very Slightly Included	Very Slightly Included	Slightly Included	Included
------------------------	--------------------------------	---------------------------	----------------------	----------



© IGI 2020, International Gemmological Institute

FD - 10 20

**www.igi.org**



THIS DOCUMENT WAS PRODUCED WITH THE FOLLOWING SECURITY MEASURES: SPECIAL DOCUMENT PAPER, INK SCREENS, WATERMARK BACKGROUND DESIGNS, HOLOGRAM AND OTHER SECURITY FEATURES NOT LISTED AND DO EXCEED DOCUMENT SECURITY INDUSTRY GUIDELINES



IGI

February 21, 2025	2.00 CARATS
GI Report No. LG64613612	E
PEARL BRILLANT	VSI
11.73 X 6.85 X 4.24 MM	EXCELLENT
	61.9%
	61%
	Medium to slightly Thick Faceted
	Pointed
	EXCELLENT
	EXCELLENT
	NONE
	REF LG64613612
Comments:	
This Laboratory Grown Diamond was created by Chemical Vapor Deposition (CVD) growth process. Type IIa	