



ELECTRONIC COPY

LABORATORY GROWN DIAMOND REPORT

March 6, 2025	
IGI Report Number	LG685511239
Description	LABORATORY GROWN DIAMOND
Shape and Cutting Style	ROUND BRILLIANT
Measurements	7.07 - 7.12 X 4.45 MM

GRADING RESULTS

Carat Weight	1.39 CARAT
Color Grade	F
Clarity Grade	VS 2
Cut Grade	EXCELLENT

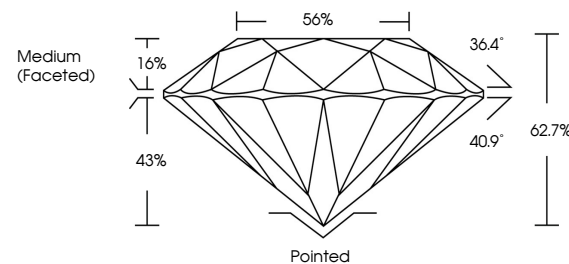
ADDITIONAL GRADING INFORMATION

Polish	EXCELLENT
Symmetry	EXCELLENT
Fluorescence	NONE
Inscription(s)	 LG685511239

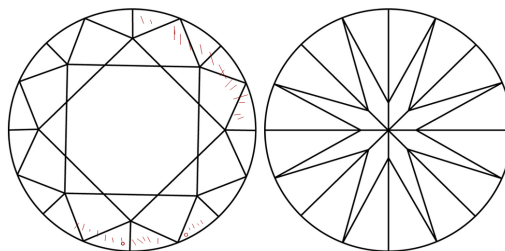
Comments: As Grown - No indication of post-growth treatment.
This Laboratory Grown Diamond was created by High Pressure High Temperature (HPHT) growth process.
Type II

LG685511239
Report verification at igi.org

PROPORTIONS

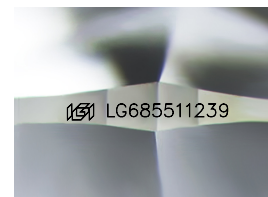


CLARITY CHARACTERISTICS



KEY TO SYMBOLS

Red symbols indicate internal characteristics.
Green symbols indicate external characteristics.



Sample Image Used

COLOR

D E F G H I J Faint Very Light Light

CLARITY

IF VS¹⁻² VS¹⁻² SI¹⁻² |¹⁻³

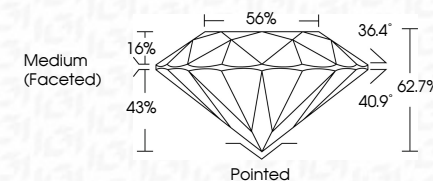
Internally Flawless	Very Very Slightly Included	Very Slightly Included	Slightly Included	Included
------------------------	--------------------------------	---------------------------	----------------------	----------



March 6, 2025	
IGI Report Number	LG685511239
Description	LABORATORY GROWN DIAMOND
Shape and Cutting Style	ROUND BRILLIANT
Measurements	7.07 - 7.12 X 4.45 MM

GRADING RESULTS

Carat Weight	1.39 CARAT
Color Grade	F
Clarity Grade	VS 2
Cut Grade	EXCELLENT



ADDITIONAL GRADING INFORMATION

Polish	EXCELLENT
Symmetry	EXCELLENT
Fluorescence	NONE
Inscription(s)	 LG685511239
Comments: As Grown - No indication of post-growth treatment.	
This Laboratory Grown Diamond was created by High Pressure High Temperature (HPHT) growth process.	
Type II	



© IGI 2020, International Gemological Institute

FD - 10 20



THIS DOCUMENT WAS PRODUCED WITH THE FOLLOWING SECURITY MEASURES: SPECIAL DOCUMENT PAPER, INK SCREENS, WATERMARK, BACKGROUND DESIGNS, HOLOGRAM AND OTHER SECURITY FEATURES NOT LISTED AND DO EXCEED DOCUMENT SECURITY INDUSTRY GUIDELINE

www.igi.org

March 6, 2025	GI Report No LG48551239	ROUND BRILLIANT	1.35 CARAT	F	VS 2	EXCELLENT	62.7%	56%	Medium (Faceted)	Pointed	EXCELLENT	EXCELLENT	NONE	lg LG48551239	Comments: No indication of post-growth treatment. This Laboratory Grown Diamond was created by High Pressure High temperature (HPHT) growth process. Type II
		1.07 - 1.12 x 4.45 MM													
		Carat Weight			Clarity Grade	Cut Grade	Depth	Table	Girdle	Quet	Polish	Symmetry	Fluorescence	Inscription(s)	