



ELECTRONIC COPY

LABORATORY GROWN DIAMOND REPORT

March 10, 2025	
IGI Report Number	LG685523671
Description	LABORATORY GROWN DIAMOND
Shape and Cutting Style	ROUND BRILLIANT
Measurements	6.70 - 6.73 X 4.11 MM

GRADING RESULTS

Carat Weight	1.13 CARAT
Color Grade	D
Clarity Grade	VVS 1
Cut Grade	IDEAL

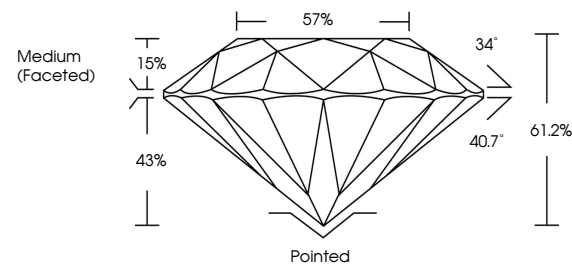
ADDITIONAL GRADING INFORMATION

Polish	EXCELLENT
Symmetry	EXCELLENT
Fluorescence	NONE
Inscription(s)	 LG685523671

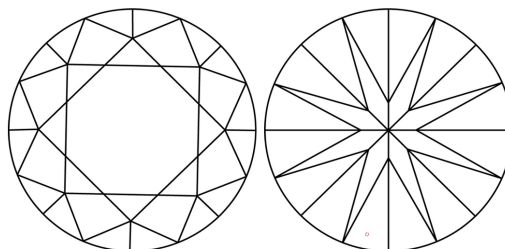
Comments: HEARTS & ARROWS
As Grown - No indication of post-growth treatment.
This Laboratory Grown Diamond was created by High
Pressure High Temperature (HPHT) growth process.
Type II

LG685523671
Report verification at lgi.org

PROPORTIONS



CLARITY CHARACTERISTICS

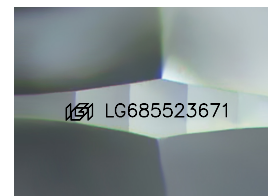


KEY TO SYMBOLS

Red symbols indicate internal characteristics.
Green symbols indicate external characteristics.



www.igi.org



Sample Image Used

COLOR

D E F G H I J Faint Very Light Light

CLARITY

IF WS¹⁻² VS¹⁻² S¹⁻² |¹⁻³

Internally Flawless	Very Very Slightly Included	Very Slightly Included	Slightly Included	Included
------------------------	--------------------------------	---------------------------	----------------------	----------



© IGI 2020, International Gemological Institute

FD - 10 20

THIS DOCUMENT WAS PRODUCED WITH THE FOLLOWING SECURITY MEASURES: SPECIAL DOCUMENT PAPER, INK SCREENS, WATERMARK, BACKGROUND DESIGNS, HOLOGRAM AND OTHER SECURITY FEATURES NOT LISTED AND DO EXCEED DOCUMENT SECURITY INDUSTRY GUIDELINES

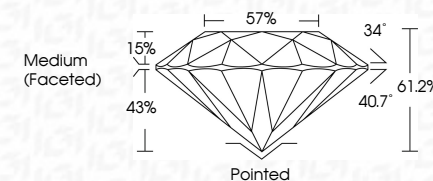
LABORATORY GROWN DIAMOND REPORT



March 10, 2025	
IGI Report Number	LG685523671
Description	LABORATORY GROWN DIAMOND
Shape and Cutting Style	ROUND BRILLIANT
Measurements	6.70 - 6.73 X 4.11 MM

GRADING RESULTS

Carat Weight	1.13 CARAT
Color Grade	D
Clarity Grade	VVS 1
Cut Grade	IDEAL



ADDITIONAL GRADING INFORMATION

Polish	EXCELLENT
Symmetry	EXCELLENT
Fluorescence	NONE
Inscription(s)	131 LG 685523671

Comments: HEARTS & ARROWS
As Grown - No indication of post-growth treatment.
This Laboratory Grown Diamond was created by High
Pressure High Temperature (HPHT) growth process.
Type II



March 10, 2026	Report No. LG45623671
ROUND BRILLIANT	
3.70 - 4.75 X 4.11 MM	1.13 CARAT
Color Grade	D
Clarity Grade	VVS 1
Cut Grade	IDEAL
Depth	61.2%
Table	57%
Girdle	Medium (Faced)
Culet	Polished
Polish	EXCELLENT
Symmetry	EXCELLENT
Fluorescence	NONE
Inscriptions	691 LG45623671
Comments: HEART & ARROW None - No indication of post-growth treatment. This Laboratory Grown Diamond was created by High Pressure High Temperature (HPHT) growth process.	

Comments:
HEARTS & ARROWS
As Grown - No Indication of post-growth
treatment
This Laboratory Grown Diamond was
created by High Pressure High
temperature (HPHT) growth process.