



ELECTRONIC COPY

LABORATORY GROWN DIAMOND REPORT

February 24, 2025	
IGI Report Number	LG685543316
Description	LABORATORY GROWN DIAMOND
Shape and Cutting Style	SQUARE CUSHION BRILLIANT
Measurements	6.24 X 6.20 X 4.14 MM

GRADING RESULTS

Carat Weight	1.23 CARAT
Color Grade	E
Clarity Grade	VS 1

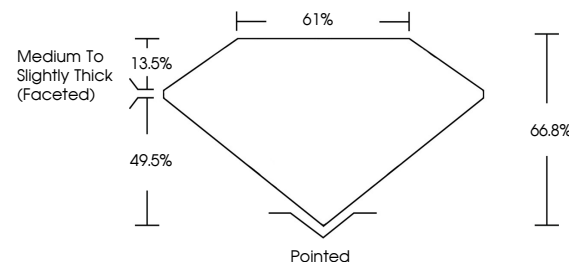
ADDITIONAL GRADING INFORMATION

Polish	VERY GOOD
Symmetry	EXCELLENT
Fluorescence	NONE
Inscription(s)	151 LG685543316

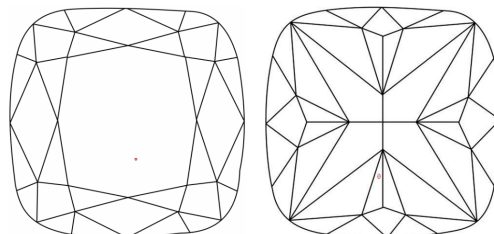
Comments: This Laboratory Grown Diamond was created by Chemical Vapor Deposition (CVD) growth process.
Type IIa

LG685543316
Report verification at lgi.org

PROPORTIONS

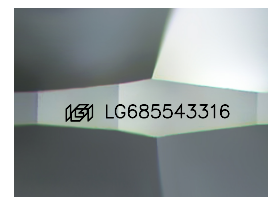


CLARITY CHARACTERISTICS



KEY TO SYMBOLS

Red symbols indicate internal characteristics.
Green symbols indicate external characteristics.



Sample Image Used

COLOR

D E F G H I J Faint Very Light Light

CLARITY

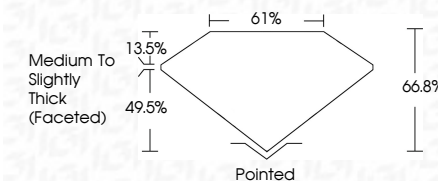
IF	VS ¹⁻²	VS ¹⁻²	SI ¹⁻²	I ¹⁻³
Internally Flawless	Very Very Slightly Included	Very Slightly Included	Slightly Included	Included



February 24, 2025	
IGI Report Number	LG685543316
Description	LABORATORY GROWN DIAMOND
Shape and Cutting Style	SQUARE CUSHION BRILLIANT
Measurements	6.24 X 6.20 X 4.14 MM

GRADING RESULTS

Carat Weight	1.23 CARAT
Color Grade	E
Clarity Grade	VS 1



ADDITIONAL GRADING INFORMATION

Polish	VERY GOOD
Symmetry	EXCELLENT
Fluorescence	NONE
Inscription(s)	 LG685543316
Comments: This Laboratory Grown Diamond was created by Chemical Vapor Deposition (CVD) growth process.	
Type IIa	



© IGI 2020, International Gemological Institute

FD - 10 20



THIS DOCUMENT WAS PRODUCED WITH THE FOLLOWING SECURITY MEASURES: SPECIAL DOCUMENT PAPER, INK SCREENS, WATERMARK, BACKGROUND DESIGNS, HOLOGRAM AND OTHER SECURITY FEATURES NOT LISTED AND DO EXCEED DOCUMENT SECURITY INDUSTRY GUIDELINE

February 24, 2025	GI Report No LG68564316	1.23 CARAT
5.24 X 5.20 X 4.14 MM	SQUARE CLUSHION BRILLIANT	
Color Weight		
Color Grade		
Clarity Grade	VS 1	
Depth	66.6%	
Table	61%	
Grade	Medium to Slightly Thick (Fleeted)	
Culet	Polished	
Polish	VERY GOOD	
Symmetry	EXCELLENT	
Fluorescence	NONE	
Annotations (s)	see LG68564316	

Comments:
This Laboratory Grown Diamond was created by Chemical Vapor Deposition (CVD) growth process.

www.igi.org