



ELECTRONIC COPY

LABORATORY GROWN DIAMOND REPORT

March 11, 2025	
IGI Report Number	LG685544895
Description	LABORATORY GROWN DIAMOND
Shape and Cutting Style	SQUARE CUSHION MODIFIED BRILLIANT
Measurements	8.43 X 8.42 X 5.38 MM

GRADING RESULTS

Carat Weight	3.43 CARATS
Color Grade	FANCY VIVID PINK
Clarity Grade	VS 1

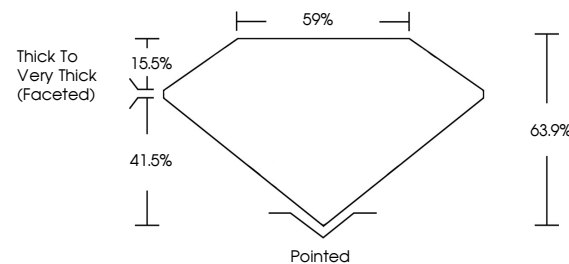
ADDITIONAL GRADING INFORMATION

Polish	VERY GOOD
Symmetry	VERY GOOD
Fluorescence	SLIGHT
Inscription(s)	 LG685544895

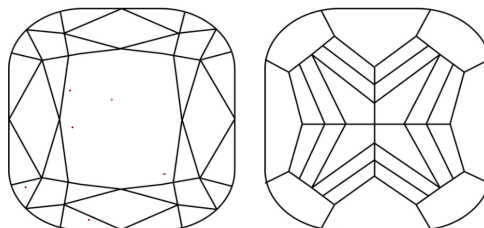
Comments: This Laboratory Grown Diamond was created by Chemical Vapor Deposition (CVD) growth process.
Indications of post-growth treatment.

LG685544895
Report verification at igi.org

PROPORTIONS

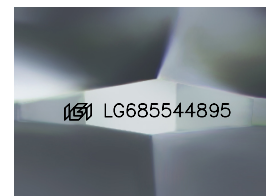


CLARITY CHARACTERISTICS



KEY TO SYMBOLS

Red symbols indicate internal characteristics.
Green symbols indicate external characteristics.



Sample Image Used

COLOR

D E F G H I J Faint Very Light Light

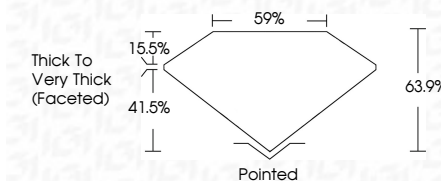
CLARITY

IF	VS ¹⁻²	VS ¹⁻²	SI ¹⁻²	I ¹⁻³
Internally Flawless	Very Very Slightly Included	Very Slightly Included	Slightly Included	Included

LABORATORY GROWN DIAMOND REPORT



March 11, 2025	
IGI Report Number	LG685544895
Description	LABORATORY GROWN DIAMOND
Shape and Cutting Style	SQUARE CUSHION MODIFIED BRILLIANT
Measurements	8.43 X 8.42 X 5.38 MM
GRADING RESULTS	
Carat Weight	3.43 CARATS
Color Grade	FANCY VIVID PINK
Clarity Grade	VS 1



ADDITIONAL GRADING INFORMATION

Polish	VERY GOOD
Symmetry	VERY GOOD
Fluorescence	SLIGHT
Inscription(s)	 LG685544895
<p>Comments: This Laboratory Grown Diamond was created by Chemical Vapor Deposition (CVD) growth process.</p> <p>Indications of post-growth treatment.</p>	



© IGI 2020, International Gemological Institute

FD - 10 20

www.igi.org



THIS DOCUMENT WAS PRODUCED WITH THE FOLLOWING SECURITY MEASURES: SPECIAL DOCUMENT PAPER, INK SCREENS, WATERMARK, BACKGROUND DESIGNS, HOLOGRAM AND OTHER SECURITY FEATURES NOT LISTED AND DO EXCEED DOCUMENT SECURITY INDUSTRY GUIDELINE

March 11, 2025	GI Report No LG48544895	3.43 CARATS	VS 1
SQ SQUARE CUSHION MODIFIED BRILLIANT		FANCY VIVID PINK	65.9%
4.43 X 8.42 X 5.38 MM			59%
Color Weight			Thick to Very Thick
Carat Grade			Faceted
Clarity			Patterned
Depth			VERY GOOD
Table			VERY GOOD
Girdle			SLIGHT
			Fluorescence
			Polish
			Symmetry
			Comments

Comments:
This Laboratory Grown Diamond was created by Chemical Vapor Deposition (CVD) growth process.