



ELECTRONIC COPY

LABORATORY GROWN DIAMOND REPORT

February 22, 2025
IGI Report Number LG685560554
Description LABORATORY GROWN DIAMOND
Shape and Cutting Style CUT CORNERED RECTANGULAR MODIFIED BRILLIANT
Measurements 11.70 X 7.78 X 4.95 MM

GRADING RESULTS

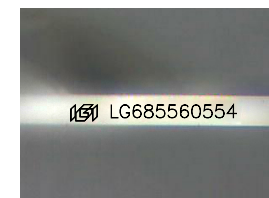
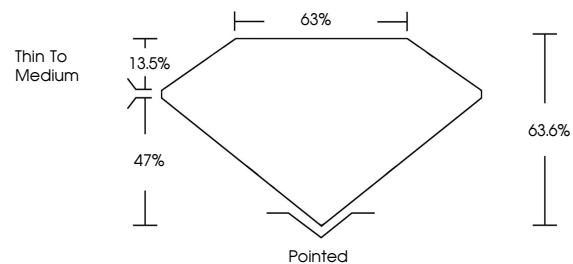
Carat Weight 3.75 CARATS
Color Grade D
Clarity Grade INTERNALLY FLAWLESS
Cut Grade EXCELLENT

ADDITIONAL GRADING INFORMATION

Polish EXCELLENT
Symmetry EXCELLENT
Fluorescence NONE
Inscription(s) IGI LG685560554

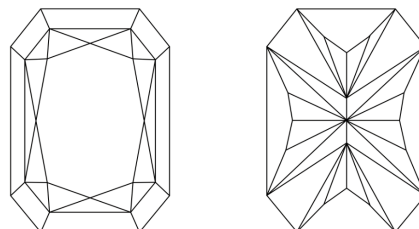
Comments: As Grown - No indication of post-growth treatment.
This Laboratory Grown Diamond was created by High Pressure High Temperature (HPHT) growth process.
Type II

PROPORTIONS



Sample Image Used

CLARITY CHARACTERISTICS



KEY TO SYMBOLS

Red symbols indicate internal characteristics.
Green symbols indicate external characteristics.

COLOR

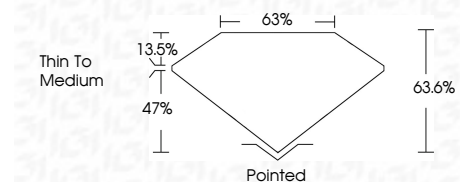
D E F G H I J Faint Very Light Light

CLARITY

IF VS¹⁻² VS¹⁻² SI¹⁻² I¹⁻³
Internally Flawless Very Very Slightly Included Very Slightly Included Slightly Included Included



February 22, 2025
IGI Report Number LG685560554
Description LABORATORY GROWN DIAMOND
Shape and Cutting Style CUT CORNERED RECTANGULAR MODIFIED BRILLIANT
Measurements 11.70 X 7.78 X 4.95 MM
GRADING RESULTS
Carat Weight 3.75 CARATS
Color Grade D
Clarity Grade INTERNALLY FLAWLESS
Cut Grade EXCELLENT



ADDITIONAL GRADING INFORMATION

Polish EXCELLENT
Symmetry EXCELLENT
Fluorescence NONE
Inscription(s) IGI LG685560554
Comments: As Grown - No indication of post-growth treatment.
This Laboratory Grown Diamond was created by High Pressure High Temperature (HPHT) growth process.
Type II



February 22, 2025
IGI Report No. LG685560554
CUT CORNERED RECT. MODIFIED BRILLIANT
11.70 X 7.78 X 4.95 MM
3.75 CARATS
D
Color Grade D
Clarity Grade EXCELLENT
Depth 63.6%
Table 68%
Girdle Thin To Medium
Culet Pointed
Polish EXCELLENT
Symmetry EXCELLENT
Fluorescence NONE
Inscriptions(s) IGI LG685560554
Comments: As Grown - No indication of post-growth treatment.
This Laboratory Grown Diamond was created by High Pressure High Temperature (HPHT) growth process.
Type II