

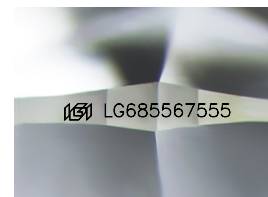
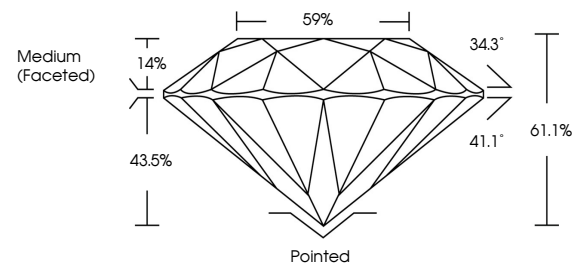


ELECTRONIC COPY

LABORATORY GROWN DIAMOND REPORT

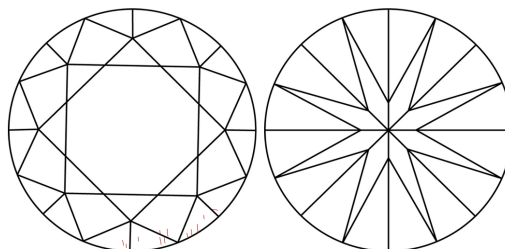
LG685567555
Report verification at igi.org

PROPORTIONS



Sample Image Used

CLARITY CHARACTERISTICS



KEY TO SYMBOLS

Red symbols indicate internal characteristics.
Green symbols indicate external characteristics.

COLOR

D E F G H I J Faint Very Light Light

CLARITY

IF WS¹⁻² VS¹⁻² SI¹⁻² |¹⁻³

Internally Flawless	Very Very Slightly Included	Very Slightly Included	Slightly Included	Included
------------------------	--------------------------------	---------------------------	----------------------	----------

LABORATORY GROWN DIAMOND REPORT



April 23, 2025

IGI Report Number **LG685567555**Description **LABORATORY GROWN DIAMOND**Shape and Cutting Style **ROUND BRILLIANT**

Measurements **7.72 - 7.76 X 4.73 MM**

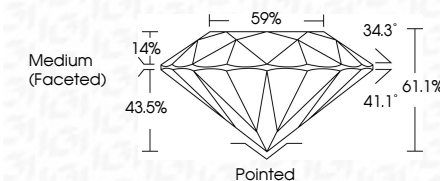
GRADING RESULTS

Carat Weight **1.74 CARAT**

Color Grade E

Clarity Grade **VVS 2**

Cut Grade **IDEAL**



ADDITIONAL GRADING INFORMATION

Polish EXCELLENT

Symmetry **EXCELLENT**

Fluorescence NONI

Inscription(s)  LG685567555

Comments: As Grown - No indication of post-growth treatment.

This Laboratory Grown Diamond was created by High Pressure High Temperature (HPHT) growth process.

Type II



www.igi.org

© IGI 2020, International Gemological Institute

FD - 10 20



THIS DOCUMENT WAS PRODUCED WITH THE FOLLOWING SECURITY MEASURES: SPECIAL DOCUMENT PAPER, INK SCREENS, WATERMARK, BACKGROUND DESIGNS, HOLOGRAM AND OTHER SECURITY FEATURES NOT LISTED AND DO EXCEED DOCUMENT SECURITY INDUSTRY GUIDELINES

April 23, 2026	IGI Report No. LG48567555	
ROUND BRILLIANT		
1.72 - 1.76 x 4.75 MM	1.74 CARAT	
Color Weight	E	
Color Grade	VVS 2	
Clarity Grade	IDEAL	
Cut Grade	61.1%	
Depth	89%	
Table		
Girdle	Medium (Faceted)	
Culet	Pointed	
Polish	EXCELLENT	
Symmetry	EXCELLENT	
Fluorescence	NONE	
Fluorescence (enhanced)	881 LG48567555	
Comments:	As Grown - No indication of post-growth treatment.	
	This Laboratory Grown Diamond was created by High Pressure High Temperature (HPHT) growth process.	
	Type IIa	