

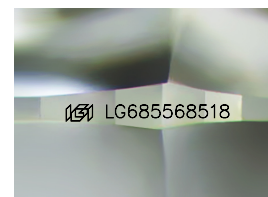
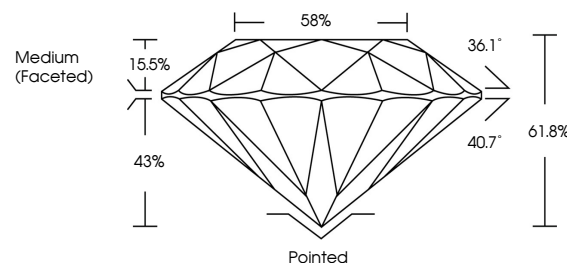


ELECTRONIC COPY

LABORATORY GROWN DIAMOND REPORT

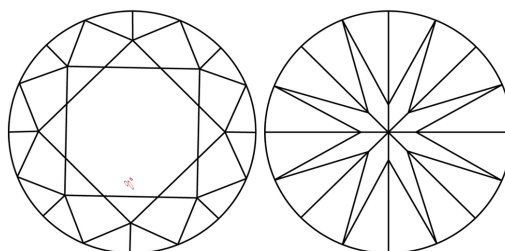
LG685568518
Report verification at igi.org

PROPORTIONS



Sample Image Used

CLARITY CHARACTERISTICS



KEY TO SYMBOLS

Red symbols indicate internal characteristics.
Green symbols indicate external characteristics.

COLOR

D E F G H I J Faint Very Light Light

CLARITY

IF WS¹⁻² VS¹⁻² S¹⁻² |¹⁻³

Internally Flawless	Very Very Slightly Included	Very Slightly Included	Slightly Included	Included
------------------------	--------------------------------	---------------------------	----------------------	----------



© IGI 2020, International Gemological Institute

FD - 10 20

www.igi.org

LABORATORY GROWN DIAMOND REPORT



May 14, 2025

IGI Report Number **LG685568518**Description **LABORATORY GROWN DIAMOND**Shape and Cutting Style **ROUND BRILLIANT**

Measurements 6.52 - 6.55 X 4.04 MM

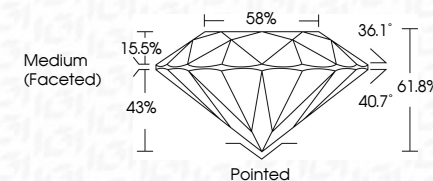
GRADING RESULTS

Carat Weight 1.07 CARAT

Color Grade D

Clarity Grade VS 2

Cut Grade **IDEAL**



ADDITIONAL GRADING INFORMATION

Polish EXCELLENT

Symmetry **EXCELLENT**Fluorescence NONInscription(s)  LG685568518

Comments: As Grown - No indication of post-growth treatment.

This Laboratory Grown Diamond was created by High Pressure High Temperature (HPHT) growth process.

Type II



May 14, 2025	GL Report No. LG85565818	ROUND BRILLIANT	1.07 CARAT	VS 2	IDEAL	61.8%	56%	Medium (Faceted)	Polished	Excellent	EXCELLENT	NONE	lg916586565818
			Carat Weight	Clarity Grade	Color Grade	Cut Grade	Depth	Table	Girdle	Culet	Polish	Symmetry	Fluorescence
													inscriptions(3)
<p>Comments:</p> <p>to Grow - No indication of post-growth treatment.</p> <p>This Laboratory Grown Diamond was created by High Pressure High temperature (HPHT) growth process.</p> <p>Type II</p>													