



ELECTRONIC COPY

LABORATORY GROWN DIAMOND REPORT

March 5, 2025	
IGI Report Number	LG685575860
Description	LABORATORY GROWN DIAMOND
Shape and Cutting Style	ROUND BRILLIANT
Measurements	10.05 - 10.09 X 6.11 MM

GRADING RESULTS

Carat Weight	3.78 CARATS
Color Grade	D
Clarity Grade	VVS 1
Cut Grade	IDEAL

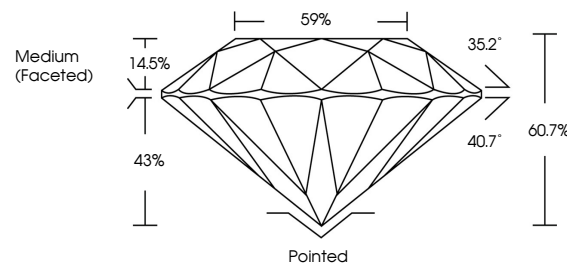
ADDITIONAL GRADING INFORMATION

Polish	EXCELLENT
Symmetry	EXCELLENT
Fluorescence	NONE
Inscription(s)	 LG685575860

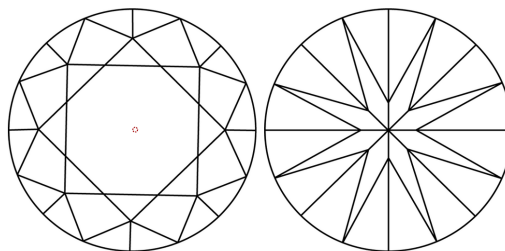
Comments: HEARTS & ARROWS
As Grown - No indication of post-growth treatment.
This Laboratory Grown Diamond was created by High
Pressure High Temperature (HPHT) growth process.
Type II

LG685575860
Report verification at igi.org

PROPORTIONS

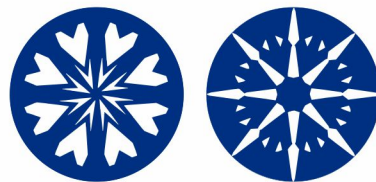


CLARITY CHARACTERISTICS

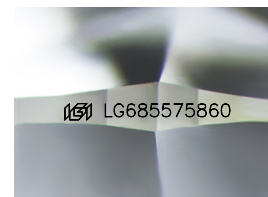


KEY TO SYMBOLS

Red symbols indicate internal characteristics.
Green symbols indicate external characteristics.



www.igi.org



Sample Image Used

COLOR

D E F G H I J Faint Very Light Light

CLARITY

IF WS¹⁻² VS¹⁻² S¹⁻² |¹⁻³

Internally Flawless	Very Very Slightly Included	Very Slightly Included	Slightly Included	Included
------------------------	--------------------------------	---------------------------	----------------------	----------



© IGI 2020, International Gemological Institute

FD - 10 20

THIS DOCUMENT WAS PRODUCED WITH THE FOLLOWING SECURITY MEASURES: SPECIAL DOCUMENT PAPER, INK SCREENS, WATERMARK, BACKGROUND DESIGNS, HOLOGRAM AND OTHER SECURITY FEATURES NOT LISTED AND DO EXCEED DOCUMENT SECURITY INDUSTRY GUIDELINES

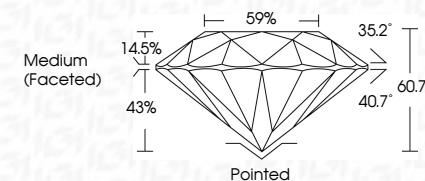
LABORATORY GROWN DIAMOND REPORT



March 5, 2025	
IGI Report Number	LG685575860
Description	LABORATORY GROWN DIAMOND
Shape and Cutting Style	ROUND BRILLIANT
Measurements	10.05 - 10.09 X 6.11 MM

GRADING RESULTS

Carat Weight	3.78 CARATS
Color Grade	D
Clarity Grade	VVS 1
Cut Grade	IDEAL



ADDITIONAL GRADING INFORMATION

Polish	EXCELLENT
Symmetry	EXCELLENT
Fluorescence	NONE
Inscription(s)	1151 LG685575860

Comments: HEARTS & ARROWS
As Grown - No indication of post-growth treatment.
This Laboratory Grown Diamond was created by High
Pressure High Temperature (HPHT) growth process.
Type II



IG

	March 5, 2026	
(G) Report No.	G-98575860	
ROUND BRILLIANT		
	10.05 - 10.07 X 6.11 MM	3.78 CARATS
Carat Weight	D	VVS 1
Color Grade	Clearly Grade	IDeAL
Clarity	Cut Grade	60.7%
Depth	Table	59%
Girdle		Medium (Faceted)
Culet	Symmetry	Poirted
Polish	Fluorescence	EXCELLENT
Inscriptions	Inscription(s)	NONE
Comments:		#GJ L6465575860
As Grown - No indication of post-growth treatment.		
This Laboratory Growth Diamond was created by High Pressure High Temperature (HPHT) growth process.		