



ELECTRONIC COPY

LG685595531
Report verification at igi.org



February 26, 2025

IGI Report Number **LG685595531**

Description **LABORATORY GROWN DIAMOND**

Shape and Cutting Style **ROUND BRILLIANT**

Measurements **6.36 - 6.41 X 3.95 MM**

GRADING RESULTS

Carat Weight **1.00 CARAT**

Color Grade **E**

Clarity Grade **VVS 2**

Cut Grade **IDEAL**

February 26, 2025

IGI Report Number **LG685595531**

Description **LABORATORY GROWN DIAMOND**

Shape and Cutting Style **ROUND BRILLIANT**

Measurements **6.36 - 6.41 X 3.95 MM**

GRADING RESULTS

Carat Weight **1.00 CARAT**

Color Grade **E**

Clarity Grade **VVS 2**

Cut Grade **IDEAL**

ADDITIONAL GRADING INFORMATION

Polish **EXCELLENT**

Symmetry **EXCELLENT**

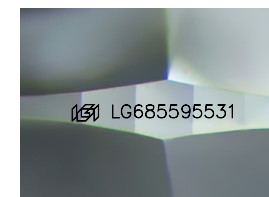
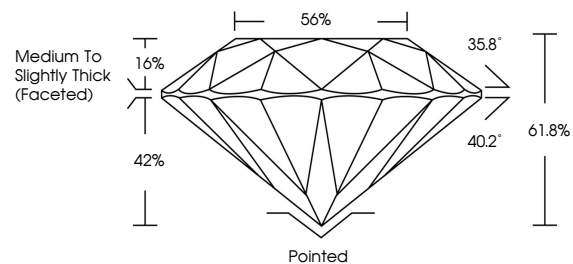
Fluorescence **NONE**

Inscription(s) **LG685595531**

Comments: As Grown - No indication of post-growth treatment.

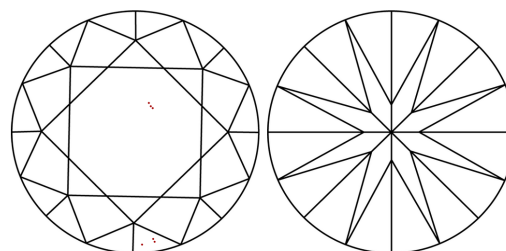
This Laboratory Grown Diamond was created by High Pressure High Temperature (HPHT) growth process. Type II

PROPORTIONS



Sample Image Used

CLARITY CHARACTERISTICS



KEY TO SYMBOLS

Red symbols indicate internal characteristics.
Green symbols indicate external characteristics.

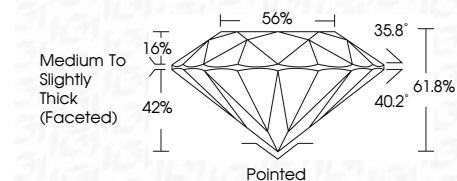
COLOR

D E F G H I J Faint Very Light Light

CLARITY

IF WS¹⁻² VS¹⁻² SI¹⁻² I¹⁻³

Internally Flawless Very Very Slightly Included Very Slightly Included Slightly Included Included



ADDITIONAL GRADING INFORMATION

Polish **EXCELLENT**

Symmetry **EXCELLENT**

Fluorescence **NONE**

Inscription(s) **LG685595531**

Comments: As Grown - No indication of post-growth treatment.

This Laboratory Grown Diamond was created by High Pressure High Temperature (HPHT) growth process. Type II



IGI



February 26, 2025	1.00 CARAT	E	VVS 2	IDEAL	61.8%	Medium To Slightly Thick (Faceted)	Pointed	EXCELLENT	EXCELLENT	NONE	LG685595531
IGI Report No LG685595531	6.36 - 6.41 X 3.95 MM	6.36 - 6.41 X 3.95 MM	6.36 - 6.41 X 3.95 MM	6.36 - 6.41 X 3.95 MM	6.36 - 6.41 X 3.95 MM	6.36 - 6.41 X 3.95 MM	6.36 - 6.41 X 3.95 MM	6.36 - 6.41 X 3.95 MM	6.36 - 6.41 X 3.95 MM	6.36 - 6.41 X 3.95 MM	6.36 - 6.41 X 3.95 MM
ROUND BRILLIANT	1.00 CARAT	E	VVS 2	IDEAL	61.8%	Medium To Slightly Thick (Faceted)	Pointed	EXCELLENT	EXCELLENT	NONE	LG685595531
Carat Weight	1.00 CARAT										
Color Grade	E										
Clarity Grade	VVS 2										
Depth	61.8%										
Table	16%										
Girdle	Medium To Slightly Thick (Faceted)										
Culet	Pointed										
Polish	EXCELLENT										
Symmetry	EXCELLENT										
Fluorescence	NONE										
Inscription(s)	LG685595531										
Comments:	As Grown - No indication of post-growth treatment. This Laboratory Grown Diamond was created by High Pressure High Temperature (HPHT) growth process. Type II										