



ELECTRONIC COPY

LABORATORY GROWN DIAMOND REPORT

March 24, 2025	
IGI Report Number	LG687530658
Description	LABORATORY GROWN DIAMOND
Shape and Cutting Style	ROUND BRILLIANT
Measurements	7.96 - 8.00 X 4.99 MM

GRADING RESULTS

Carat Weight	1.95 CARAT
Color Grade	F
Clarity Grade	VS 1
Cut Grade	IDEAL

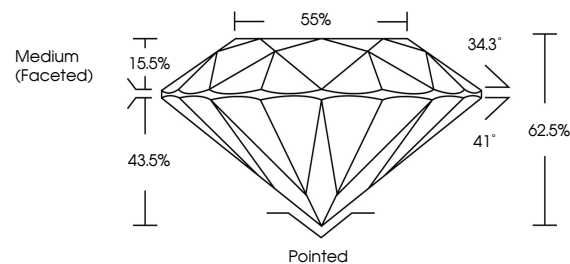
ADDITIONAL GRADING INFORMATION

Polish	EXCELLENT
Symmetry	EXCELLENT
Fluorescence	NONE
Inscription(s)	 LG687530658

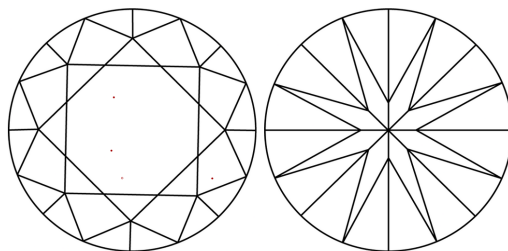
Comments: This Laboratory Grown Diamond was created by Chemical Vapor Deposition (CVD) growth process.
Type IIa

LG687530658
Report verification at igi.org

PROPORTIONS

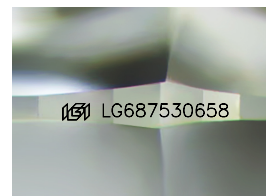


CLARITY CHARACTERISTICS



KEY TO SYMBOLS

Red symbols indicate internal characteristics.
Green symbols indicate external characteristics.



Sample Image Used

COLOR

D E F G H I J Faint Very Light Light

CLARITY

IF VS¹⁻² VS¹⁻² SI¹⁻² |¹⁻³

Internally Flawless	Very Very Slightly Included	Very Slightly Included	Slightly Included	Included
------------------------	--------------------------------	---------------------------	----------------------	----------

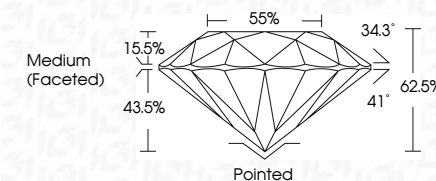
LABORATORY GROWN DIAMOND REPORT



March 24, 2025	
IGI Report Number	LG687530658
Description	LABORATORY GROWN DIAMOND
Shape and Cutting Style	ROUND BRILLIANT
Measurements	7.96 - 8.00 X 4.99 MM

GRADING RESULTS

Carat Weight	1.95 CARAT
Color Grade	F
Clarity Grade	VS 1
Cut Grade	IDEAL



ADDITIONAL GRADING INFORMATION

Polish	EXCELLENT
Symmetry	EXCELLENT
Fluorescence	NONE
Inscription(s)	 LG687530658
<p>Comments: This Laboratory Grown Diamond was created by Chemical Vapor Deposition (CVD) growth process.</p> <p>Type IIa</p>	



IG



© IGI 2020, International Gemological Institute

FD - 10 20

www.igi.org

THIS DOCUMENT WAS PRODUCED WITH THE FOLLOWING SECURITY MEASURES: SPECIAL DOCUMENT PAPER, INK SCREENS, WATERMARK, BACKGROUND DESIGNS, HOLOGRAM AND OTHER SECURITY FEATURES NOT LISTED AND DO EXCEED DOCUMENT SECURITY INDUSTRY GUIDELINE

March 24, 2026	GI Report No: LGA67530458	1.95 CARAT
ROUND BRILLIANT		F
	Color Grade	VS 1
	Clarity Grade	IDEAL
	Depth	62.5%
	Table	55%
	Girdle	Medium (Faceted)
	Culet	Pointed
	Polish	EXCELLENT
	Symmetry	EXCELLENT
	Fluorescence	NONE
	Inscriptions(s)	691 LG667530458

Comments:
 This is a Natural, Fancy Cut, Colorless, Round, Brilliant Cut, 1.95 Carat, VS1 Clarity, F Color, Medium (Faceted) Girdle, Medium (Faceted) Culet, Excellent Polish, Excellent Symmetry, None Fluorescence, No Inscription(s) Diamond was created by Chemical Vapor Deposition (CVD) growth process.
 Type IIG