

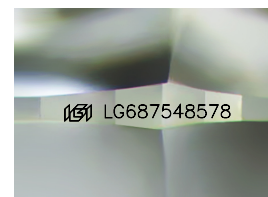
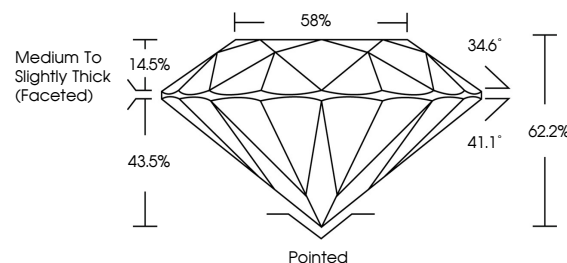


ELECTRONIC COPY

LABORATORY GROWN DIAMOND REPORT

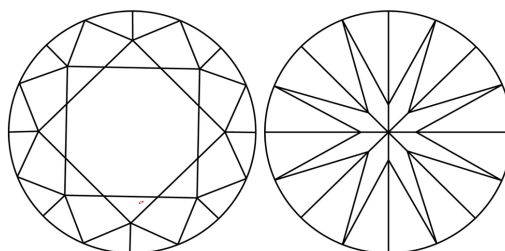
LG687548578
Report verification at igi.org

PROPORTIONS



Sample Image Used

CLARITY CHARACTERISTICS



KEY TO SYMBOLS

Red symbols indicate internal characteristics.
Green symbols indicate external characteristics.

COLOR

D E F G H I J Faint Very Light Light

CLARITY

IF WS¹⁻² VS¹⁻² SI¹⁻² |¹⁻³

Internally Flawless	Very Very Slightly Included	Very Slightly Included	Slightly Included	Included
------------------------	--------------------------------	---------------------------	----------------------	----------



© IGI 2020, International Gemological Institute

FD - 10 20

www.igi.org

LABORATORY GROWN DIAMOND REPORT



March 4, 2025

IGI Report Number **LG687548578**Description **LABORATORY GROWN DIAMOND**Shape and Cutting Style **ROUND BRILLIANT**

Measurements 6.50 - 6.52 X 4.05 MM

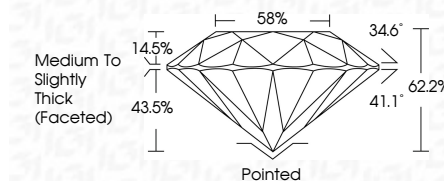
GRADING RESULTS

Carat Weight 1.07 CARAT

Color Grade D

Clarity Grade VS 1

Cut Grade **EXCELLENT**



ADDITIONAL GRADING INFORMATION

Polish **EXCELLENT**Symmetry **EXCELLENT**Fluorescence **NONE**Inscription(s) LG687548578

Comments: As Grown - No indication of post-growth treatment.

This Laboratory Grown Diamond was created by High Pressure High Temperature (HPHT) growth process.

Type II



March 4, 2026	1.07 CARAT	VS 1	Painted	No Growth - No Indication of post-growth treatment. The Laboratory Growth Diamond was created by High Pressure High Temperature (HPHT) growth process. Type II
GJ Report No. LG487548578	EXCELLENT	62.2%	EXCELLENT	
ROUND BRILLIANT	88%	Medium to Slightly Thick (Faceted)	NONE	
1.50 - 6.52 x .652 x 4.05 MM			(#) LG487548578	
	Color Grade	Clarity Grade	Cut Grade	
	Depth	Table	Symmetry	
	Fluorescence	Polish	Engraving/Inscriptions	