



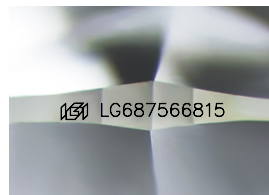
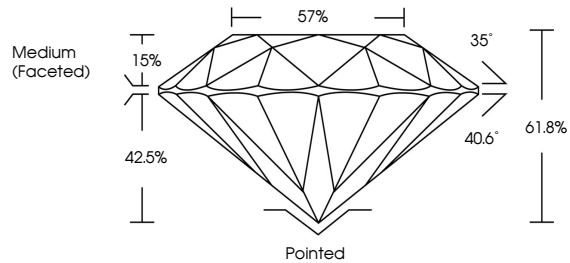
**INTERNATIONAL
GEMOLOGICAL
INSTITUTE**

ELECTRONIC COPY

LABORATORY GROWN DIAMOND REPORT

LG687566815
Report verification at igi.org

PROPORTIONS



Sample Image Used

COLOR

D E F G H I J Faint Very Light Light

CLARITY

IF	WS ¹⁻²	VS ¹⁻²	SI ¹⁻²	I ¹⁻³
----	-------------------	-------------------	-------------------	------------------

Internally Flawless	Very Very Slightly Included	Very Slightly Included	Slightly Included	Included
------------------------	--------------------------------	---------------------------	----------------------	----------



© IGI 2020, International Gemological Institute

FD - 10 20

www.igi.org

LABORATORY GROWN DIAMOND REPORT



March 8, 2025

IGI Report Number **LG687566815**

Description	LABORATORY GROWN DIAMOND
-------------	--------------------------

Shape and Cutting Style **ROUND BRILLIANT**

Measurements 7.71 - 7.74 X 4.77 MM

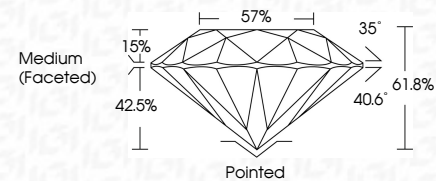
GRADING RESULTS

Carat Weight **1.77 CARAT**

Color Grade **D**

Clarity Grade VVS 2

Cut Grade **IDEAL**



ADDITIONAL GRADING INFORMATION

Polish **EXCELLENT**Symmetry **EXCELLENT**Fluorescence **NONE**Inscription(s) LG687566815

Comments: As Grown - No indication of post-growth treatment.

This Laboratory Grown Diamond was created by High Pressure High Temperature (HPHT) growth process.

Type II



IGI

March 8, 2025	IGI Report No. 656975648 16	
Lab Requested By	IGI Report No. 656975648 16	
Lab Report No.	656975648 16	
Lab Report Date	March 8, 2025	
Lab Report Time	10:00 AM	
Lab Report Location	Lab 1	
Lab Report Operator	John Doe	
Lab Report Reviewer	John Doe	
Lab Report Status	Complete	
Lab Report Comments	See below for details.	
Lab Report Notes	See below for details.	
Lab Report Attachments	See below for details.	
Lab Report Footer	See below for details.	