



**INTERNATIONAL  
GEMOLOGICAL  
INSTITUTE**

**ELECTRONIC COPY**

LG687568444  
Report verification at [igi.org](https://igi.org)

LABORATORY GROWN DIAMOND REPORT



March 6, 2025

IGI Report Number **LG687568444**

Description	LABORATORY GROWN DIAMOND
-------------	--------------------------

Shape and Cutting Style **PEAR BRILLIANT**

Measurements 11.44 X 7.13 X 4.40 MM

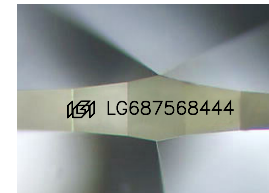
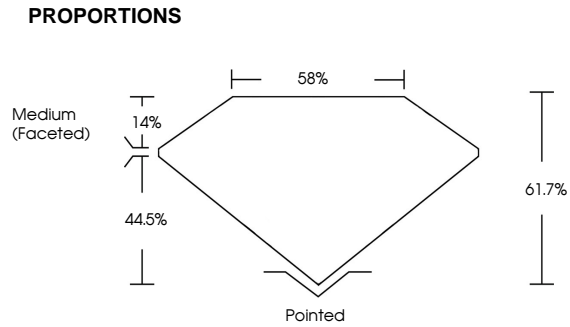
## GRADING RESULTS

Carat Weight **2.02 CARATS**

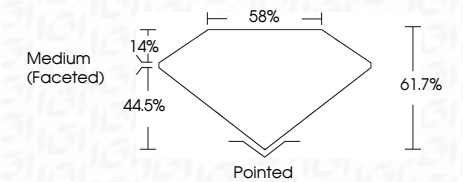
Color Grade	E
-------------	---

Clarity Grade VS 1

Cut Grade **EXCELLENT**



Sample Image Used



## COLOR

D E F G H I J      Faint      Very Light      Light

## CLARITY

IF                      WS<sup>1-2</sup>                      VS<sup>1-2</sup>                      SI<sup>1-2</sup>                      I<sup>1-3</sup>

Internally Flawless	Very Very Slightly Included	Very Slightly Included	Slightly Included	Included
------------------------	--------------------------------	---------------------------	----------------------	----------



© IGI 2020, International Gemological Institute

FD - 10 20

**www.igi.org**



THIS DOCUMENT WAS PRODUCED WITH THE FOLLOWING SECURITY MEASURES: SPECIAL DOCUMENT PAPER, INK SCREENS, WATERMARK, BACKGROUND DESIGNS, HOLOGRAM AND OTHER SECURITY FEATURES NOT LISTED AND DO EXCEED DOCUMENT SECURITY INDUSTRY GUIDELINES



IGI

<b>March 6, 2025</b>					
<b>GJ Report No USG7698444</b>					
<b>FPEAR BRILLIANT</b>					
<b>11.44 X 7.13 X 4.40 MM</b>					
Color Weight	Carat Weight	2.02 CARATS	E I	VS 1	
Clarity Grade				EXCELLENT	
Cut Grade				61.7%	
Table				58%	
Girdle				Medium (Faceted)	
Culet				Painted	
Polish				EXCELLENT	
Symmetry				EXCELLENT	
Fluorescence				NONE	
Inscription(s)				(#) USG7698444	
<b>Comments:</b>					
The Laboratory Grown Diamond was created by Chemical Vapor Deposition (CVD) growth process.					
Type IIa					