

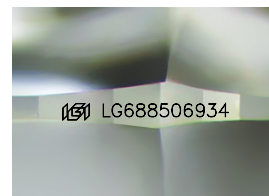
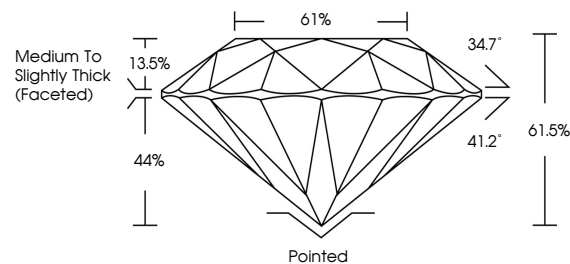


**ELECTRONIC COPY**

## LABORATORY GROWN DIAMOND REPORT

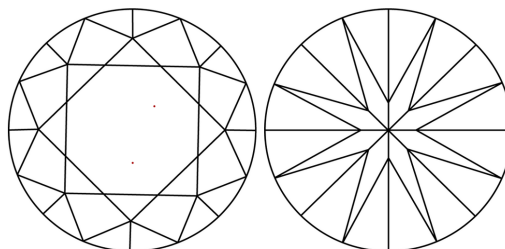
LG688506934  
Report verification at [igi.org](https://igi.org)

## PROPORTIONS



Sample Image Used

## CLARITY CHARACTERISTICS



### KEY TO SYMBOLS

Red symbols indicate internal characteristics.  
Green symbols indicate external characteristics.

## COLOR

D E F G H I J Faint Very Light Light

## CLARITY

IF WS<sup>1-2</sup> VS<sup>1-2</sup> SI<sup>1-2</sup> |<sup>1-3</sup>

|                        |                                |                           |                      |          |
|------------------------|--------------------------------|---------------------------|----------------------|----------|
| Internally<br>Flawless | Very Very<br>Slightly Included | Very<br>Slightly Included | Slightly<br>Included | Included |
|------------------------|--------------------------------|---------------------------|----------------------|----------|

## LABORATORY GROWN DIAMOND REPORT



March 3, 2025

IGI Report Number **LG688506934**Description **LABORATORY GROWN DIAMOND**Shape and Cutting Style **ROUND BRILLIANT**

Measurements 6.47 - 6.50 X 3.99 MM

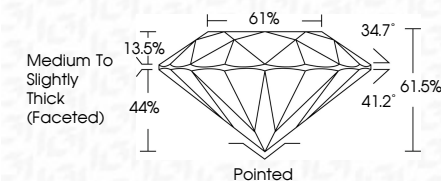
## GRADING RESULTS

Carat Weight **1.04 CARAT**

Color Grade E

Clarity Grade **VVS 2**

Cut Grade **EXCELLENT**



### ADDITIONAL GRADING INFORMATION

Polish **EXCELLENT**Symmetry **EXCELLENT**Fluorescence **NONE**Inscription(s)  LG688506934

Comments: This Laboratory Grown Diamond was created by Chemical Vapor Deposition (CVD) growth process.  
Type IIa



IG



© IGI 2020, International Gemological Institute

FD - 10 20

**www.igi.org**



THIS DOCUMENT WAS PRODUCED WITH THE FOLLOWING SECURITY MEASURES: SPECIAL DOCUMENT PAPER, INK SCREENS, WATERMARK, BACKGROUND DESIGNS, HOLOGRAM AND OTHER SECURITY FEATURES NOT LISTED AND DO EXCEED DOCUMENT SECURITY INDUSTRY GUIDELINES

March 3, 2025  
IGI Report No LG688506934  
ROUND BRILLIANT

|                              |                                    |
|------------------------------|------------------------------------|
| <b>6.47 - 6.60 X 3.99 MM</b> | <b>1.04 CARAT</b>                  |
| Carat Weight                 | E                                  |
| Color Grade                  | VVS 2                              |
| Clarity Grade                | EXCELLENT                          |
| Cut Grade                    | 61.5%                              |
| Depth                        | 61%                                |
| Table                        | Medium To Slightly Thick (rounded) |
| Girdle                       |                                    |
| Culet                        | Pointed                            |
| Polish                       | EXCELLENT                          |
| Symmetry                     | EXCELLENT                          |
| Fluorescence                 | NONE                               |
| Inspection(s)                | cert/22sept2024                    |

**Comments:**  
This Laboratory Grown Diamond was  
created by Chemical Vapor Deposition  
(CVD) growth process.