

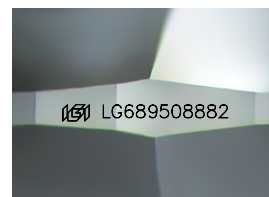
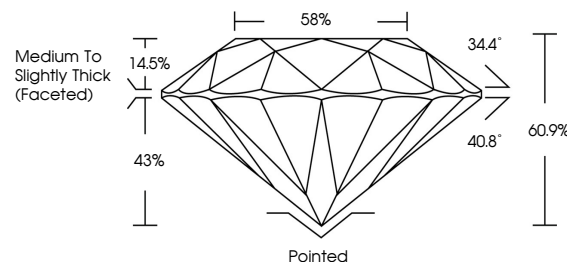


ELECTRONIC COPY

LABORATORY GROWN DIAMOND REPORT

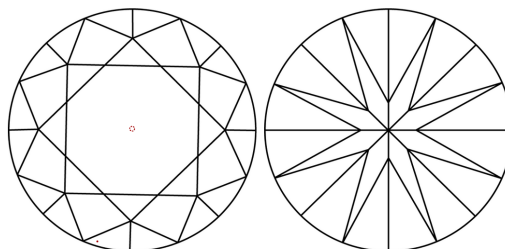
LG689508882
Report verification at lgi.org

PROPORTIONS



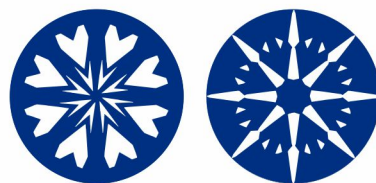
Sample Image Used

CLARITY CHARACTERISTICS



KEY TO SYMBOLS

Red symbols indicate internal characteristics.
Green symbols indicate external characteristics.



www.igi.org

COLOR

D E F G H I J Faint Very Light Light

CLARITY

IF WS¹⁻² VS¹⁻² SI¹⁻² |¹⁻³

Internally Flawless	Very Very Slightly Included	Very Slightly Included	Slightly Included	Included
------------------------	--------------------------------	---------------------------	----------------------	----------



© IGI 2020, International Gemological Institute

FD - 10 20

THIS DOCUMENT WAS PRODUCED WITH THE FOLLOWING SECURITY MEASURES: SPECIAL DOCUMENT PAPER, INK SCREENS, WATERMARK, BACKGROUND DESIGNS, HOLOGRAM AND OTHER SECURITY FEATURES NOT LISTED AND DO EXCEED DOCUMENT SECURITY INDUSTRY GUIDELINES

LABORATORY GROWN DIAMOND REPORT



March 4, 2025

IGI Report Number **LG689508882**Description **LABORATORY GROWN DIAMOND**Shape and Cutting Style **ROUND BRILLIANT**

Measurements 6.71 - 6.77 X 4.11 MM

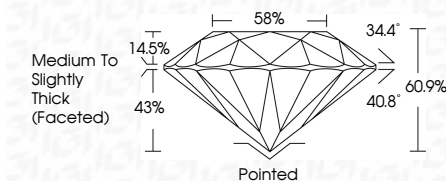
GRADING RESULTS

Carat Weight 1.15 CARAT

Color Grade D

Clarity Grade WS 1

Cut Grade **IDEAL**



ADDITIONAL GRADING INFORMATION

Polish **EXCELLENT**Symmetry **EXCELLENT**Fluorescence **NONE**Inscription(s) LG689508882

Comments: HEARTS & ARROWS

As Grown - No indication of post-growth treatment.

This Laboratory Grown Diamond was created by High Pressure High Temperature (HPHT) growth process.

Type II



IG

March 4, 2025	GI Report No. LG49650882	1.15 CARAT	
ROUND BRILLIANT			
3.71 - 5.77 X 4.11 MM			
Color Weight			
Carat Grade			
Clarity Grade		VVS 1	
Cut Grade		IDEAL	
Depth		60.2%	
Table		56%	
Girdle		Medium to Slightly Thick (faceted)	
Culet		Pointed	
Polish		EXCELLENT	
Symmetry		EXCELLENT	
Fluorescence		NONE	
Annotations (if any)		fgl LG49650882	
Comments:			
HEARTS & ARROWS			
As Grown - No indication of post-growth treatment.			
This Laboratory Grown Diamond was inspected by a High Pressure High Temperature (HPHT) growth process. Type II.			