

ELECTRONIC COPY

LABORATORY GROWN DIAMOND REPORT

March 12, 2025	
IGI Report Number	LG689537613
Description	LABORATORY GROWN DIAMOND
Shape and Cutting Style	ROUND BRILLIANT
Measurements	8.18 - 8.21 X 5.01 MM

GRADING RESULTS

Carat Weight	2.08 CARATS
Color Grade	F
Clarity Grade	VVS 2
Cut Grade	IDEAL

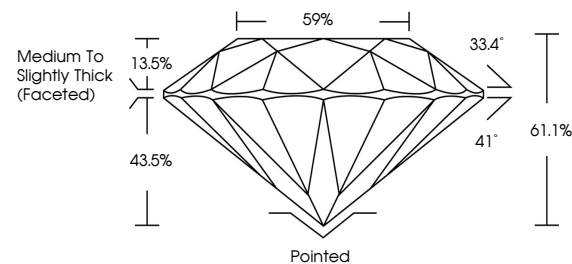
ADDITIONAL GRADING INFORMATION

Polish	EXCELLENT
Symmetry	EXCELLENT
Fluorescence	NONE
Inscription(s)	 LG689537613

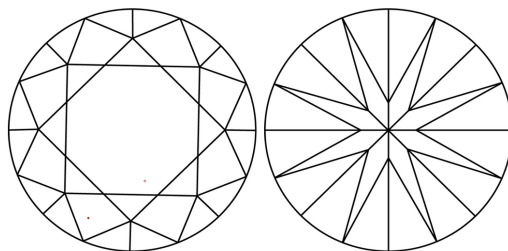
Comments: This Laboratory Grown Diamond was created by Chemical Vapor Deposition (CVD) growth process.
Type IIa

LG689537613
Report verification at igi.org

PROPORTIONS

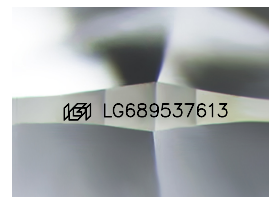


CLARITY CHARACTERISTICS



KEY TO SYMBOLS

Red symbols indicate internal characteristics.
Green symbols indicate external characteristics.



Sample Image Used

COLOR

D E F G H I J Faint Very Light Light

CLARITY

IF VS¹⁻² VS¹⁻² SI¹⁻² |¹⁻³

Internally Flawless	Very Very Slightly Included	Very Slightly Included	Slightly Included	Included
---------------------	-----------------------------	------------------------	-------------------	----------

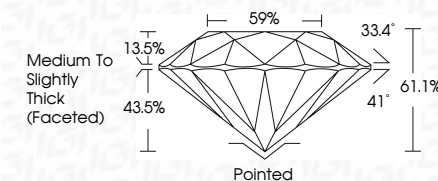
LABORATORY GROWN DIAMOND REPORT



March 12, 2025	
IGI Report Number	LG689537613
Description	LABORATORY GROWN DIAMOND
Shape and Cutting Style	ROUND BRILLIANT
Measurements	8.18 - 8.21 X 5.01 MM

GRADING RESULTS

Carat Weight	2.08 CARATS
Color Grade	F
Clarity Grade	VVS 2
Cut Grade	IDEAL



ADDITIONAL GRADING INFORMATION

Polish	EXCELLENT
Symmetry	EXCELLENT
Fluorescence	NONE
Inscription(s)	 LG689537613
<p>Comments: This Laboratory Grown Diamond was created by Chemical Vapor Deposition (CVD) growth process.</p> <p>Type IIa</p>	



IG



© IGI 2020, International Gemological Institute

FD - 10 20

March 12, 2025
IGI Report No LG689537613
ROUND BRILLIANT

18.18 - 8.21 X 5.01 MM	Carat Weight	2.08 CARATS
	Color Grade	F
	Clarity Grade	VS2
	Cut Grade	IDEAL
	Depth	61.1%
	Table	59%
	Girdle	Medium to Slightly Thick (Faceted)
	Culet	Pointed
	Polish	EXCELLENT
	Symmetry	EXCELLENT
	Fluorescence	NONE

Comments:
This Laboratory Grown Diamond was
created by Chemical Vapor Deposition
(CVD) growth process.