

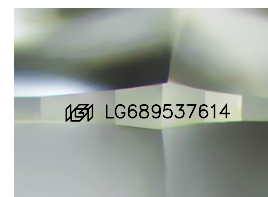
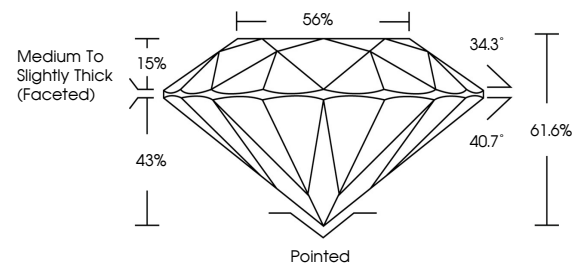


**ELECTRONIC COPY**

## LABORATORY GROWN DIAMOND REPORT

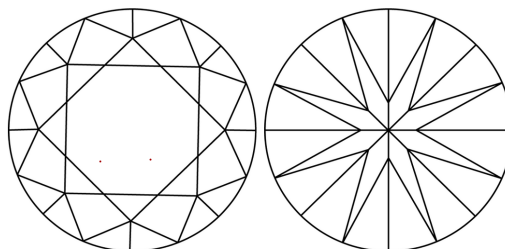
LG689537614  
Report verification at [igi.org](https://igi.org)

## PROPORTIONS



Sample Image Used

## CLARITY CHARACTERISTICS



## KEY TO SYMBOLS

Red symbols indicate internal characteristics.  
Green symbols indicate external characteristics.

## COLOR

D E F G H I J Faint Very Light Light

## CLARITY

IF WS<sup>1-2</sup> VS<sup>1-2</sup> SI<sup>1-2</sup> |<sup>1-3</sup>

Internally Flawless	Very Very Slightly Included	Very Slightly Included	Slightly Included	Included
------------------------	--------------------------------	---------------------------	----------------------	----------

## LABORATORY GROWN DIAMOND REPORT



March 10, 2025

IGI Report Number **LG689537614**

Description	LABORATORY GROWN DIAMOND
-------------	--------------------------

Shape and Cutting Style **ROUND BRILLIANT**

Measurements	8.14 - 8.18 X 5.02 MM
--------------	-----------------------

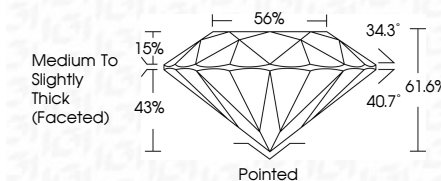
## GRADING RESULTS

Carat Weight **2.05 CARATS**

Color Grade F

Clarity Grade **VVS 2**

Cut Grade **IDEAL**



### ADDITIONAL GRADING INFORMATION

Polish **EXCELLENT**Symmetry **EXCELLENT**Fluorescence **NONE**Inscription(s)  LG689537614

Comments: This Laboratory Grown Diamond was created by Chemical Vapor Deposition (CVD) growth process.  
Type IIa



© IGI 2020, International Gemological Institute

FD - 10 20

**www.igi.org**



THIS DOCUMENT WAS PRODUCED WITH THE FOLLOWING SECURITY MEASURES: SPECIAL DOCUMENT PAPER, INK SCREENS, WATERMARK, BACKGROUND DESIGNS, HOLOGRAM AND OTHER SECURITY FEATURES NOT LISTED AND DO EXCEED DOCUMENT SECURITY INDUSTRY GUIDELINE

	March 10, 2026
	Gf Report No: LG89537614
	ROUND BRILLIANT
	2.05 CARATS F VVS 2 IDEAL 61% 55%
	Medium to Slightly Thick (Faceted)
Culet	Poited
Polish	EXCELLENT
Symmetry	B'CELENT
Fluorescence	NONE
Inscriptions(s)	#69LG89537614
<b>Comments:</b> <b>This Natural Color Diamond was created by Chemical Vapor Deposition (CVD) growth process.</b> <b>Type IIa</b>	