

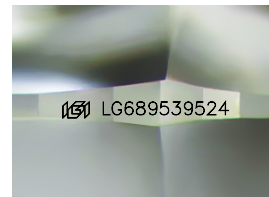
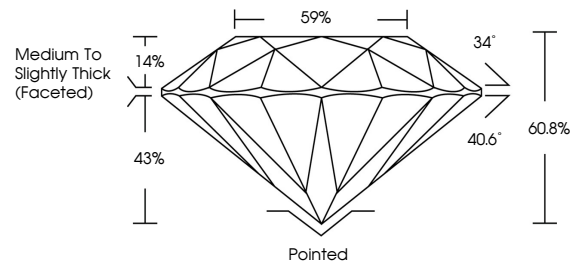


**INTERNATIONAL  
GEMOLOGICAL  
INSTITUTE**

**ELECTRONIC COPY**

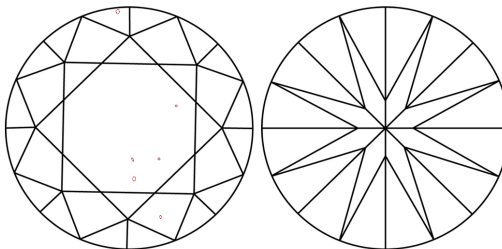
LG689539524  
Report verification at [igi.org](https://igi.org)

## PROPORTIONS



Sample Image Used

## CLARITY CHARACTERISTICS



## KEY TO SYMBOLS

Red symbols indicate internal characteristics.  
Green symbols indicate external characteristics.

## COLOR

D E F G H I J Faint Very Light Light

## CLARITY

IF      WS<sup>1-2</sup>      VS<sup>1-2</sup>      SI<sup>1-2</sup>      |<sup>1-3</sup>

Internally Flawless	Very Very Slightly Included	Very Slightly Included	Slightly Included	Included
------------------------	--------------------------------	---------------------------	----------------------	----------



March 12, 2025

IGI Report Number **LG689539524**

Description	LABORATORY GROWN DIAMOND
-------------	--------------------------

Shape and Cutting Style **ROUND BRILLIANT**

Measurements	8.21 - 8.27 X 5.01 MM
--------------	-----------------------

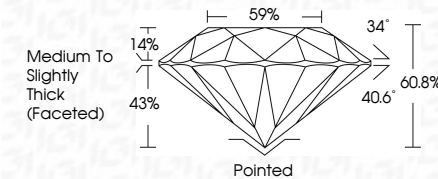
## GRADING RESULTS

Carat Weight **2.10 CARATS**

Color Grade	E
-------------	---

Clarity Grade **VS 2**

Cut Grade **IDEAL**



### ADDITIONAL GRADING INFORMATION

Polish **EXCELLENCE**Symmetry **EXCELLENCE**

Fluorescence NONI

Inscription(s)  LG689539524

Comments: This Laboratory Grown Diamond was created by Chemical Vapor Deposition (CVD) growth process.  
Type IIa



IG



© IGI 2020, International Gemological Institute

FD - 10 20

**www.igi.org**

THIS DOCUMENT WAS PRODUCED WITH THE FOLLOWING SECURITY MEASURES: SPECIAL DOCUMENT PAPER, INK SCREENS, WATERMARK, BACKGROUND DESIGNS, HOLOGRAM AND OTHER SECURITY FEATURES NOT LISTED AND DO EXCEED DOCUMENT SECURITY INDUSTRY GUIDELINES

March 12, 2025	IGI Report No LG59639524	
ROUND BRILLIANT		
6.21 - 6.27 X 5.01 MM		
Carat Weight		2.10 CARATS
Color Grade		E
Clarity Grade		Vs2
Cut Grade		IDEAL
Depth		61.6%
Table		59%
Circle		Medium to Slightly Thick (checked)
Gulet		Ported
Polish		EXCELLENT
Symmetry		EXCELLENT
Fluorescence		NONE
Inscription(s)		IGI LG59639524
Comments: Chemically Grown Diamond was created by Chemical Vapor Deposition (CVD) growth process. Type IIa		