

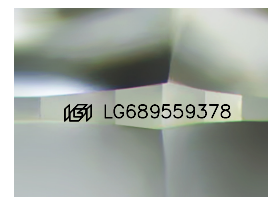
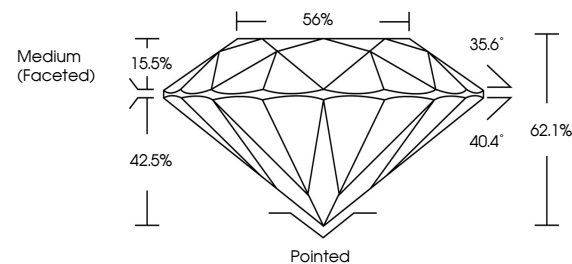


ELECTRONIC COPY

LABORATORY GROWN DIAMOND REPORT

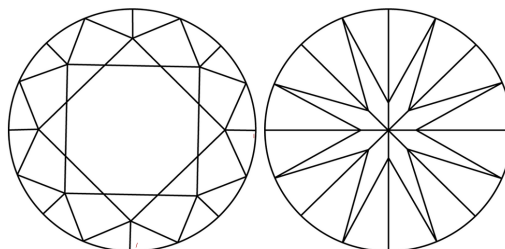
LG689559378
Report verification at igi.org

PROPORTIONS



Sample Image Used

CLARITY CHARACTERISTICS



KEY TO SYMBOLS

Red symbols indicate internal characteristics.
Green symbols indicate external characteristics.

COLOR

D E F G H I J Faint Very Light Light

CLARITY

IF WS¹⁻² VS¹⁻² SI¹⁻² |¹⁻³

Internally Flawless	Very Very Slightly Included	Very Slightly Included	Slightly Included	Included
------------------------	--------------------------------	---------------------------	----------------------	----------



© IGI 2020, International Gemological Institute

FD - 10 20

www.igi.org

LABORATORY GROWN DIAMOND REPORT



April 25, 2025

IGI Report Number **LG689559378**Description **LABORATORY GROWN DIAMOND**Shape and Cutting Style **ROUND BRILLIANT**

Measurements 6.36 - 6.41 X 3.96 MM

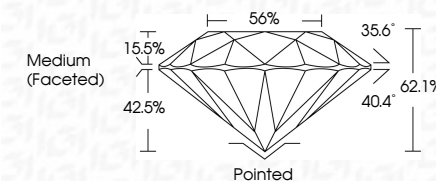
GRADING RESULTS

Carat Weight 1.00 CARAT

Color Grade D

Clarity Grade **VS 1**

Cut Grade **IDEAL**



ADDITIONAL GRADING INFORMATION

Polish **EXCELLENT**Symmetry **EXCELLENT**Fluorescence **NONE**Inscription(s)  LG689559378

Comments: As Grown - No indication of post-growth treatment.

This Laboratory Grown Diamond was created by High Pressure High Temperature (HPHT) growth process.

Type II



April 26, 2026	1.00 CARAT	D	VVS 1	Excellent	Painted	Comments: As seen - No indication of post-growth treatment. This Laboratory Grown Diamond was created by High Pressure High Temperature (HPHT) growth process. Type IIa
G1 Report No. LG49559378	Color Grade	IDEAL	62.1%	50%	EXCELLENT	
ROUND BRILLIANT	Clarity Grade	60%	Medium (Faceted)	NONE	FLUORESCENCE	
3.54 - 4.41 X 5.95 MM	Cut	Very Good			None	
	Depth	Good			88% LG49559378	