

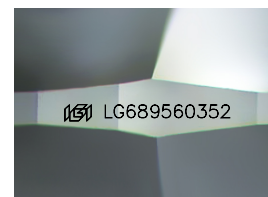
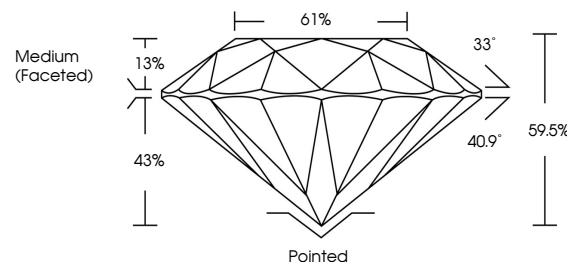


ELECTRONIC COPY

LABORATORY GROWN DIAMOND REPORT

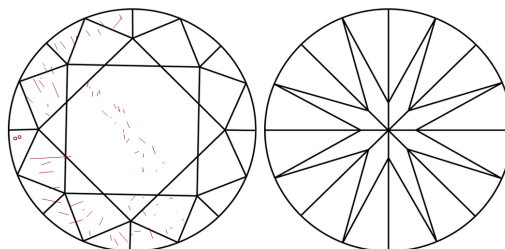
LG689560352
Report verification at lgi.org

PROPORTIONS



Sample Image Used

CLARITY CHARACTERISTICS



KEY TO SYMBOLS

Red symbols indicate internal characteristics.
Green symbols indicate external characteristics.

COLOR

D E F G H I J Faint Very Light Light

CLARITY

IF WS¹⁻² VS¹⁻² SI¹⁻² |¹⁻³

Internally Flawless	Very Very Slightly Included	Very Slightly Included	Slightly Included	Included
------------------------	--------------------------------	---------------------------	----------------------	----------



© IGI 2020, International Gemological Institute

FD - 10 20

www.igi.org

LABORATORY GROWN DIAMOND REPORT



May 13, 2025

IGI Report Number **LG689560352**Description **LABORATORY GROWN DIAMOND**Shape and Cutting Style **ROUND BRILLIANT**

Measurements 6.64 - 6.66 X 3.96 MM

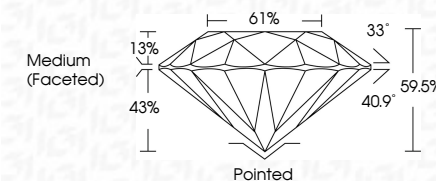
GRADING RESULTS

Carat Weight 1.07 CARAT

Color Grade E

Clarity Grade SI 1

Cut Grade **EXCELLENT**



ADDITIONAL GRADING INFORMATION

Polish EXCELLENT

Symmetry **EXCELLENT**Fluorescence **NONE**Inscription(s) LG689560352

Comments: As Grown - No indication of post-growth treatment.

This Laboratory Grown Diamond was created by High Pressure High Temperature (HPHT) growth process.

Type II



May 13, 2025	1.07 CARAT	S1 E	Pointed	Symmetry Fluorescence Inclusions (SI) G5895620392
Report No: LG49950332	EXCELLENT	59.5%	EXCELLENT	
ROUND BRILLIANT	01%	Medium (Faceted)	NONE	
6.61 x 6.65 x 3.95 MM	Color Grade	Clarity Grade	Cut Grade	
	Carat Weight	Depth	Table	
		Girdle		

Comments:
 As Grown - No Indication of post-growth treatment.
 This Laboratory Grown Diamond was created by High Pressure High Temperature (HPHT) growth process. Type II