

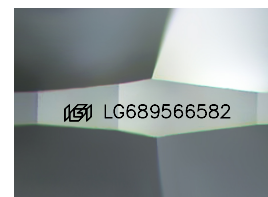
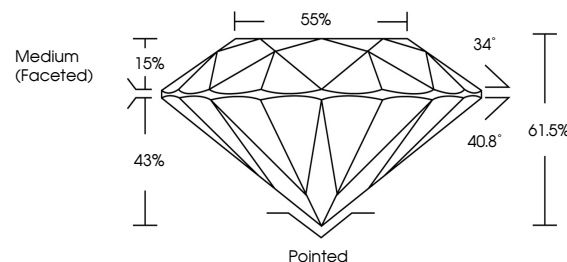


ELECTRONIC COPY

LABORATORY GROWN DIAMOND REPORT

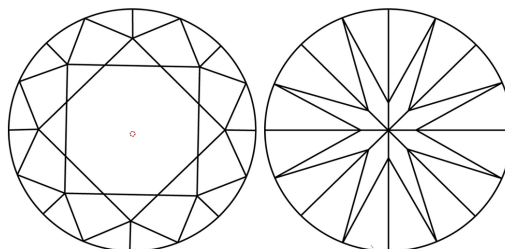
LG689566582
Report verification at lgi.org

PROPORTIONS



Sample Image Used

CLARITY CHARACTERISTICS



KEY TO SYMBOLS

Red symbols indicate internal characteristics.
Green symbols indicate external characteristics.

COLOR

D E F G H I J Faint Very Light Light

CLARITY

IF WS¹⁻² VS¹⁻² S¹⁻² |¹⁻³

Internally Flawless	Very Very Slightly Included	Very Slightly Included	Slightly Included	Included
------------------------	--------------------------------	---------------------------	----------------------	----------



© IGI 2020, International Gemological Institute

FD - 10 20

www.igi.org

LABORATORY GROWN DIAMOND REPORT



April 28, 2025

IGI Report Number **LG689566582**Description **LABORATORY GROWN DIAMOND**Shape and Cutting Style **ROUND BRILLIANT**

Measurements 9.28 - 9.33 X 5.72 MM

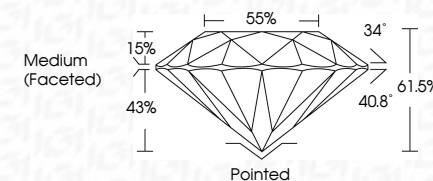
GRADING RESULTS

Carat Weight **3.01 CARATS**

Color Grade

Clarity Grade WS 1

Cut Grade **IDEAL**



ADDITIONAL GRADING INFORMATION

Polish **EXCELLENT**Symmetry **EXCELLENT**Fluorescence **NONE**Inscription(s) LG689566582

Comments: As Grown - No indication of post-growth treatment.

This Laboratory Grown Diamond was created by High Pressure High Temperature (HPHT) growth process.

Type II



April 28, 2026	3.01 CARATS	D	VVS 1	Painted	Excellent Symmetry Excellent Fluorescence NONE #816589565592
G Report No LG489565592	Color Grade	IDEAL	61.5%	EXCELLENT	
ROUND BRILLIANT			85%		
28-28-28-9.33 X 5.72 MM				Medium (Faceted)	
	Coral Weight	Color Grade	Clarity Grade	Cut	
			Our Grade	Polish	
			Depth	Symmetry	
			Table	Fluorescence	
			Grade		

Comments:

As Seen - No indication of post-growth treatment.

This Laboratory Grown Diamond was created by High Pressure High Temperature (HPHT) growth process.

Type 1a