

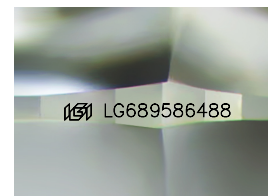
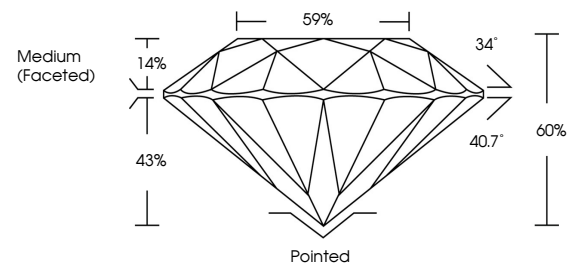


**ELECTRONIC COPY**

## LABORATORY GROWN DIAMOND REPORT

LG689586488  
Report verification at [igi.org](https://igi.org)

## PROPORTIONS



Sample Image Used

## CLARITY CHARACTERISTICS



### KEY TO SYMBOLS

Red symbols indicate internal characteristics.  
Green symbols indicate external characteristics.



**www.igi.org**

## LABORATORY GROWN DIAMOND REPORT



March 8, 2025

IGI Report Number **LG689586488**Description **LABORATORY GROWN DIAMOND**Shape and Cutting Style **ROUND BRILLIANT**

Measurements 6.67 - 6.70 X 4.01 MM

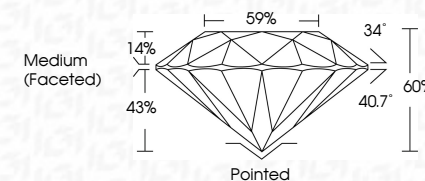
## GRADING RESULTS

Carat Weight **1.09 CARAT**

Color Grade	D
-------------	---

Clarity Grade **INTERNALLY FLAWLESS**

Cut Grade **IDEAL**



### ADDITIONAL GRADING INFORMATION

Polish **EXCELLENT**Symmetry **EXCELLENT**Fluorescence **NONE**Inscription(s)  LG689586488

Comments: HEARTS & ARROWS

As Grown - No indication of post-growth treatment.

This Laboratory Grown Diamond was created by High

Pressure High Temperature (HPHT) growth process.

Type II



March 8, 2025	GI Report LUG5695488	1.07 CARAT
ROUND BRILLIANT		
	6.67 - 6.70 X 4.01 MM	
	Carat Weight	
	Color Grade	D
	Clarity Grade	IF
	Cut Grade	IDEAL
	Depth	60%
	Table	69%
	Girdle	Medium (Faceted)
	Cluef	Painted
	Polish	EXCELLENT
	Symmetry	EXCELLENT
	Fluorescence	NONE
	Inscription(s)	489 LUG5695488
<p><b>Comments:</b></p> <p>As Grown - No Indication of post-growth treatment.</p> <p>This Laboratory's Grown Diamond was created by High Pressure High Temperature (HPHT) growth process.</p>		



THIS DOCUMENT WAS PRODUCED WITH THE FOLLOWING SECURITY MEASURES: SPECIAL DOCUMENT PAPER, INK SCREENS, WATERMARK, BACKGROUND DESIGNS, HOLOGRAM AND OTHER SECURITY FEATURES NOT LISTED AND DO EXCEED DOCUMENT SECURITY INDUSTRY GUIDELINE