

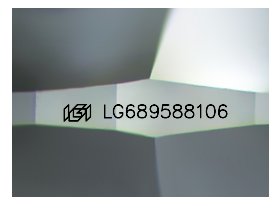
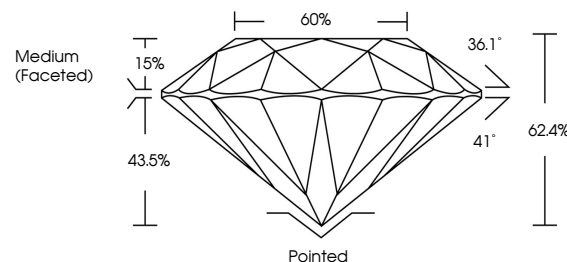


ELECTRONIC COPY

LABORATORY GROWN DIAMOND REPORT

LG689588106
Report verification at lgi.org

PROPORTIONS



Sample Image Used

CLARITY CHARACTERISTICS



KEY TO SYMBOLS

Red symbols indicate internal characteristics.
Green symbols indicate external characteristics.

COLOR

D E F G H I J Faint Very Light Light

CLARITY

IF WS¹⁻² VS¹⁻² S¹⁻² |¹⁻³

Internally Flawless	Very Very Slightly Included	Very Slightly Included	Slightly Included	Included
------------------------	--------------------------------	---------------------------	----------------------	----------



© IGI 2020, International Gemological Institute

FD - 10 20

www.igi.org

LABORATORY GROWN DIAMOND REPORT



March 11, 2025

IGI Report Number **LG689588106**Description **LABORATORY GROWN DIAMOND**Shape and Cutting Style **ROUND BRILLIANT**

Measurements 8.50 - 8.54 X 5.32 MM

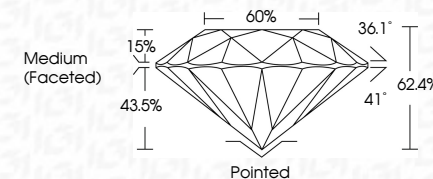
GRADING RESULTS

Carat Weight **2.42 CARATS**

Color Grade D

Clarity Grade **INTERNALLY FLAWLESS**

Cut Grade **IDEAL**



ADDITIONAL GRADING INFORMATION

Polish **EXCELLENT**Symmetry **EXCELLENT**Fluorescence NONInscription(s) LG689588100

Comments: As Grown - No indication of post-growth treatment.

This Laboratory Grown Diamond was created by High Pressure High Temperature (HPHT) growth process.

Type II



March 11, 2025	2.42 CARATS
GI Report No LG69698106	IF
SOUND BRILLIANT	IDEAL
	62.4%
	60%
	Medium (Faceted)
5.50 - 6.64 x 5.32 MM	Pointed
Color Weight	Excellent
Color Grade	Excellent
Clarity Grade	NONE
Cut Grade	lg LG69698106
Depth	
Table	
Girdle	
	Culet
	Polish
	Symmetry
	Fluorescence
	Inscriptions
Comments:	
	to Grow - No indication of post-growth
	This Laboratory Grown Diamond was
	created by High Pressure High
	temperature (HPHT) growth process.
	Type II