



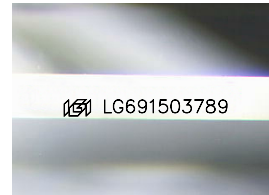
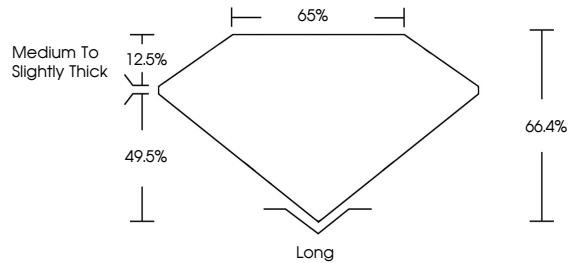
**INTERNATIONAL
GEMOLOGICAL
INSTITUTE**

ELECTRONIC COPY

LABORATORY GROWN DIAMOND REPORT

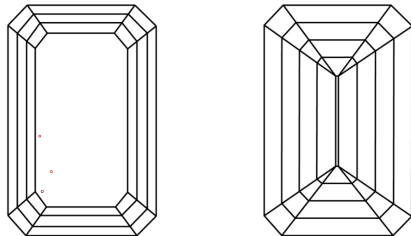
LG691503789
Report verification at igi.org

PROPORTIONS



Sample Image Used

CLARITY CHARACTERISTICS



KEY TO SYMBOLS

Red symbols indicate internal characteristics.
Green symbols indicate external characteristics.

COLOR

D E F G H I J Faint Very Light Light

CLARITY

IF WS¹⁻² VS¹⁻² SI¹⁻² I¹⁻³

Internally Flawless	Very Very Slightly Included	Very Slightly Included	Slightly Included	Included
------------------------	--------------------------------	---------------------------	----------------------	----------



© IGI 2020, International Gemological Institute

FD - 10 20

LABORATORY GROWN DIAMOND REPORT



March 18, 2025

IGI Report Number **LG691503789**

Description	LABORATORY GROWN DIAMOND
-------------	--------------------------

Shape and Cutting Style **EMERALD CUT**

Measurements 7.00 X 4.85 X 3.22 MM

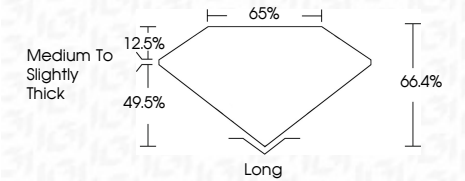
GRADING RESULTS

Carat Weight 1.06 CARAT

Color Grade H

Clarity Grade **VVS 2**

Cut Grade **EXCELLENT**



ADDITIONAL GRADING INFORMATION

Polish **EXCELLENT**Symmetry **EXCELLENT**Fluorescence **NONE**Inscription(s) **151** LG691503789

Comments: This Laboratory Grown Diamond was created by Chemical Vapor Deposition (CVD) growth process.
Type IIa



IGI

March 18, 2025	IGI Report No. IGG91503789	GENERAL CUT	
7.00 X 4.85 X 3.22 MM	Color Grade Color Weight H	1.06 CARAT	
	Clarity Grade Cut Grade	VVS 2 EXCELLENT	
	Depth Table	66.4% 65%	
	Grade	Medium To Slightly thick	
	Culet Polish	Long EXCELLENT	
	Symmetry Fluorescence	EXCELLENT NONE	
	Inscription(s)	IGI IGG91503789	
Comments: The Laboratory Grown Diamond was created by Chemical Vapor Deposition (CVD) with Process.			
	Type IIA		

This Laboratory Grown Diamond was created by Chemical Vapor Deposition (CVD) growth process.
Type IIa

www.igi.org