



ELECTRONIC COPY

LABORATORY GROWN DIAMOND REPORT

March 16, 2025	
IGI Report Number	LG691523501
Description	LABORATORY GROWN DIAMOND
Shape and Cutting Style	ROUND BRILLIANT
Measurements	6.60 - 6.63 X 4.06 MM

GRADING RESULTS

Carat Weight	1.08 CARAT
Color Grade	E
Clarity Grade	VVS 2
Cut Grade	IDEAL

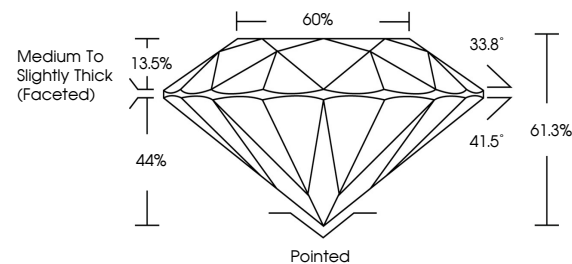
ADDITIONAL GRADING INFORMATION

Polish	EXCELLENT
Symmetry	EXCELLENT
Fluorescence	NONE
Inscription(s)	 LG691523501

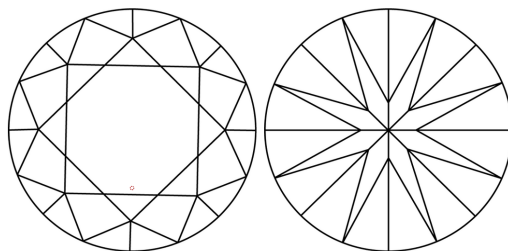
Comments: This Laboratory Grown Diamond was created by Chemical Vapor Deposition (CVD) growth process.
Type IIa

LG691523501
Report verification at igi.org

PROPORTIONS

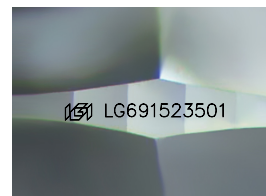


CLARITY CHARACTERISTICS



KEY TO SYMBOLS

Red symbols indicate internal characteristics.
Green symbols indicate external characteristics.



Sample Image Used

COLOR

D E F G H I J Faint Very Light Light

CLARITY

IF WS¹⁻² VS¹⁻² SI¹⁻² |¹⁻³

Internally Flawless	Very Very Slightly Included	Very Slightly Included	Slightly Included	Included
------------------------	--------------------------------	---------------------------	----------------------	----------

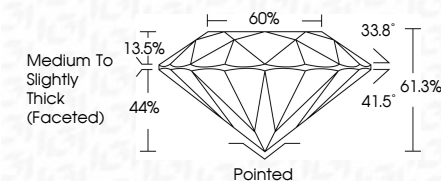
LABORATORY GROWN DIAMOND REPORT



March 16, 2025	
IGI Report Number	LG691523501
Description	LABORATORY GROWN DIAMOND
Shape and Cutting Style	ROUND BRILLIANT
Measurements	6.60 - 6.63 X 4.06 MM

GRADING RESULTS

Carat Weight	1.08 CARAT
Color Grade	E
Clarity Grade	VVS 2
Cut Grade	IDEAL



ADDITIONAL GRADING INFORMATION

Polish	EXCELLENT
Symmetry	EXCELLENT
Fluorescence	NONE
Inscription(s)	 LG691523501
Comments: This Laboratory Grown Diamond was created by Chemical Vapor Deposition (CVD) growth process.	
Type IIa	



IG



© IGI 2020, International Gemological Institute

FD - 10 20

www.igi.org



THIS DOCUMENT WAS PRODUCED WITH THE FOLLOWING SECURITY MEASURES: SPECIAL DOCUMENT PAPER, INK SCREENS, WATERMARK, BACKGROUND DESIGNS, HOLOGRAM AND OTHER SECURITY FEATURES NOT LISTED AND DO EXCEED DOCUMENT SECURITY INDUSTRY GUIDELINES

March 16, 2025	GI Report No L56911230501	1.08 CARAT	VVS 2	Pointed	Excellent	None	1691 L56911230501
ROUND BRILLIANT			IDEAL	61.5%	EXCELLENT		
			60%	Medium to slightly Thick (faceted)	EXCELLENT		
4.60 - 4.63 X 4.06 MM							
Carat Weight							
Color Grade							
Clarity Grade							
Cut Grade							
Depth							
Table							
Girdle							
Culet							
Polish							
Symmetry							
Fluorescence							
Inscription(s)							

Comments:
 Created by Gemva Diamond USA
 Graded by Gemva Vapor Deposition
 (VD) Grading process.
 Type IIG