



**ELECTRONIC COPY**

## LABORATORY GROWN DIAMOND REPORT

March 18, 2025	
IGI Report Number	LG691558241
Description	LABORATORY GROWN DIAMOND
Shape and Cutting Style	ROUND BRILLIANT
Measurements	8.11 - 8.17 X 5.05 MM

## GRADING RESULTS

Carat Weight	2.05 CARATS
Color Grade	D
Clarity Grade	VS 1
Cut Grade	IDEAL

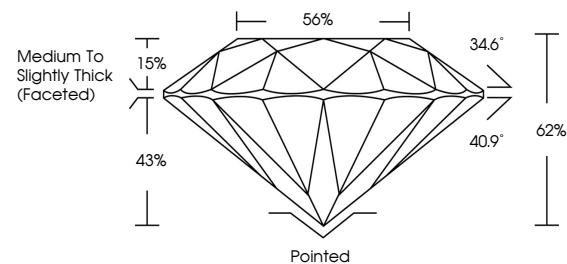
### ADDITIONAL GRADING INFORMATION

Polish	EXCELLENT
Symmetry	EXCELLENT
Fluorescence	NONE
Inscription(s)	 LG691558241

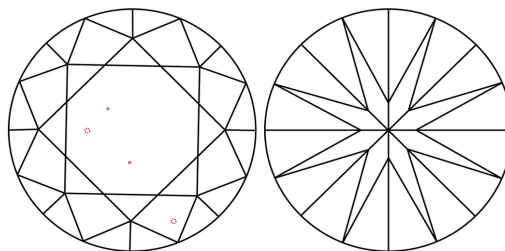
Comments: HEARTS & ARROWS  
This Laboratory Grown Diamond was created by  
Chemical Vapor Deposition (CVD) growth process.  
Type IIa

LG691558241  
Report verification at [igi.org](https://igi.org)

## PROPORTIONS



## CLARITY CHARACTERISTICS

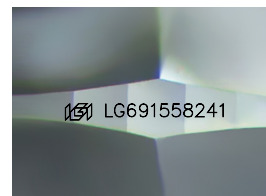


## KEY TO SYMBOLS

Red symbols indicate internal characteristics.  
Green symbols indicate external characteristics.



**www.igi.org**



Sample Image Used

**COLOR**

D E F G H I J Faint Very Light Light

## CLARITY

IF	VS <sup>1-2</sup>	VS <sup>1-2</sup>	SI <sup>1-2</sup>	I <sup>1-3</sup>
Internally Flawless	Very Very Slightly Included	Very Slightly Included	Slightly Included	Included



© IGI 2020, International Gemological Institute

FD - 10 20

THIS DOCUMENT WAS PRODUCED WITH THE FOLLOWING SECURITY MEASURES: SPECIAL DOCUMENT PAPER, INK SCREENS, WATERMARK, BACKGROUND DESIGNS, HOLOGRAM AND OTHER SECURITY FEATURES NOT LISTED AND DO EXCEED DOCUMENT SECURITY INDUSTRY GUIDELINES

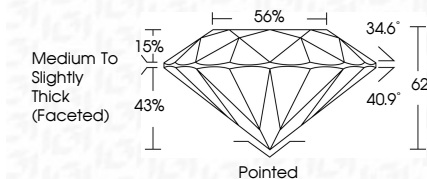
## LABORATORY GROWN DIAMOND REPORT



March 18, 2025	
IGI Report Number	LG691558241
Description	LABORATORY GROWN DIAMOND
Shape and Cutting Style	ROUND BRILLIANT
Measurements	8.11 - 8.17 X 5.05 MM

## GRADING RESULTS

Carat Weight	2.05 CARATS
Color Grade	D
Clarity Grade	VS 1
Cut Grade	IDEAL



### ADDITIONAL GRADING INFORMATION

Polish	EXCELLENT
Symmetry	EXCELLENT
Fluorescence	NONE
Inscription(s)	<del>LG</del> LG691558241
<p>Comments: HEARTS &amp; ARROWS          This Laboratory Grown Diamond was created by          Chemical Vapor Deposition (CVD) growth process.          Type IIa</p>	



IG

March 18, 2025	2.05 CARATS	D	VSI 1	Polished
IGI Report No. LG591559241	Carat Weight	Color Grade	IDEAL	EXCELLENT
ROUND BRILLIANT	1.81 - 1.87 x 5.05 MM	Cut Grade	62%	EXCELLENT
		Table	65%	NONE
		Depth	Medium to slightly Thick (Faceted)	68% LG591559241
		Girdle		
		Culet		
		Polish		
		Symmetry		
		Fluorescence		
		Inscription(s)		
Comments:				
HEARTS & ARROWS				
This Laboratory Grown Diamond was created by Chemical Vapor Deposition (CVD) growth process.				