

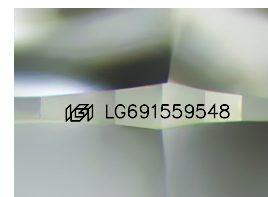
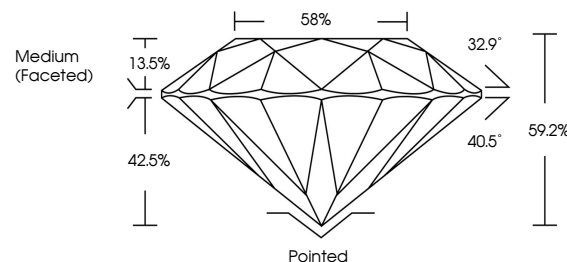


ELECTRONIC COPY

LABORATORY GROWN DIAMOND REPORT

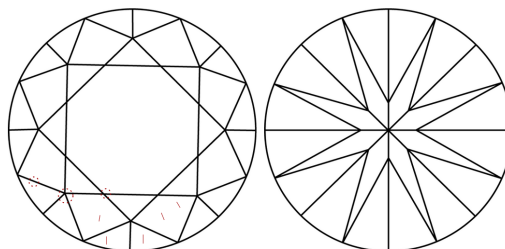
LG691559548
Report verification at igi.org

PROPORTIONS



Sample Image Used

CLARITY CHARACTERISTICS



KEY TO SYMBOLS

Red symbols indicate internal characteristics.
Green symbols indicate external characteristics.

COLOR

D E F G H I J Faint Very Light Light

CLARITY

IF WS¹⁻² VS¹⁻² S¹⁻² |¹⁻³

Internally Flawless	Very Very Slightly Included	Very Slightly Included	Slightly Included	Included
------------------------	--------------------------------	---------------------------	----------------------	----------



© IGI 2020, International Gemological Institute

FD - 10 20

www.igi.org

LABORATORY GROWN DIAMOND REPORT



March 18, 2025

IGI Report Number **LG691559548**Description **LABORATORY GROWN DIAMOND**Shape and Cutting Style **ROUND BRILLIANT**

Measurements 6.68 - 6.72 X 3.97 MM

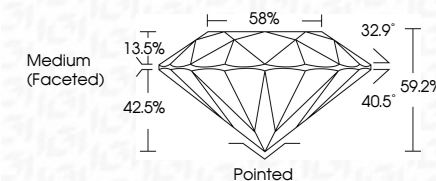
GRADING RESULTS

Carat Weight 1.09 CARAT

Color Grade D

Clarity Grade VS 1

Cut Grade **IDEAL**



ADDITIONAL GRADING INFORMATION

Polish **EXCELLENT**Symmetry **EXCELLENT**Fluorescence **NONE**Inscription(s) LG691559548

Comments: As Grown - No indication of post-growth treatment.

This Laboratory Grown Diamond was created by High Pressure High Temperature (HPHT) growth process.

Type II



March 18, 2026							
GJ Report No L6491559548							
ROUND BRILLIANT							
		4.68 - 4.72 X 3.97 MM					
Carat Weight	Color Grade	Clarity Grade	Vs1	Ideal	VS1	Carat	D
			99%	99%	99%		
			Medium Faceted				
Culet	Symmetry	Fluorescence	Poished	Excellent	Excellent		
	Inscriptions(s)		None	None	None		
L6491559548							
Comments:							
As Grown - No indication of post-growth treatment.							
This Laboratory Grown Diamond was created by High Pressure High Temperature (HPHT) growth process.							
Image 1							