



**ELECTRONIC COPY**

## LABORATORY GROWN DIAMOND REPORT

March 18, 2025	
IGI Report Number	LG691560181
Description	LABORATORY GROWN DIAMOND
Shape and Cutting Style	ROUND BRILLIANT
Measurements	7.28 - 7.34 X 4.63 MM

## GRADING RESULTS

Carat Weight	1.53 CARAT
Color Grade	D
Clarity Grade	VVS 2
Cut Grade	EXCELLENT

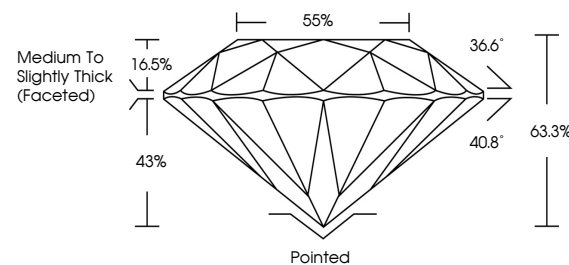
### ADDITIONAL GRADING INFORMATION

Polish	EXCELLENT
Symmetry	EXCELLENT
Fluorescence	NONE
Inscription(s)	 LG691560181

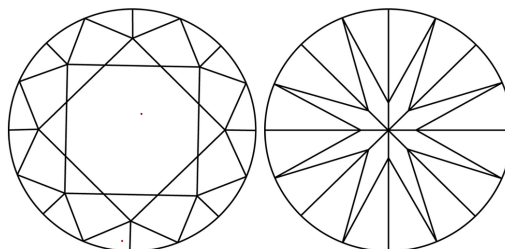
Comments: This Laboratory Grown Diamond was created by Chemical Vapor Deposition (CVD) growth process.  
Type IIa

LG691560181  
Report verification at [igi.org](https://igi.org)

## PROPORTIONS

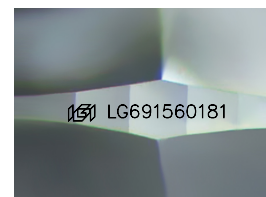


## CLARITY CHARACTERISTICS



## KEY TO SYMBOLS

Red symbols indicate internal characteristics.  
Green symbols indicate external characteristics.



Sample Image Used

## COLOR

D E F G H I J Faint Very Light Light

## CLARITY

IF WS<sup>1-2</sup> VS<sup>1-2</sup> SI<sup>1-2</sup> |<sup>1-3</sup>

Internally Flawless	Very Very Slightly Included	Very Slightly Included	Slightly Included	Included
------------------------	--------------------------------	---------------------------	----------------------	----------

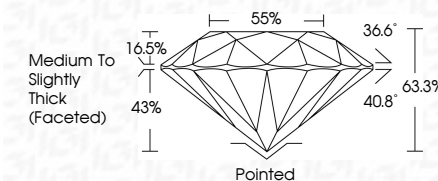
## LABORATORY GROWN DIAMOND REPORT



March 18, 2025	
IGI Report Number	LG691560181
Description	LABORATORY GROWN DIAMOND
Shape and Cutting Style	ROUND BRILLIANT
Measurements	7.28 - 7.34 X 4.63 MM

## GRADING RESULTS

Carat Weight	1.53 CARAT
Color Grade	D
Clarity Grade	VVS 2
Cut Grade	EXCELLENT



### ADDITIONAL GRADING INFORMATION

Polish	EXCELLENT
Symmetry	EXCELLENT
Fluorescence	NONE
Inscription(s)	 LG69156018
<p>Comments: This Laboratory Grown Diamond was created by Chemical Vapor Deposition (CVD) growth process.</p> <p>Type IIa</p>	



© IGI 2020, International Gemological Institute

FD - 10 20

**www.igi.org**



THIS DOCUMENT WAS PRODUCED WITH THE FOLLOWING SECURITY MEASURES: SPECIAL DOCUMENT PAPER, INK SCREENS, WATERMARK, BACKGROUND DESIGNS, HOLOGRAM AND OTHER SECURITY FEATURES NOT LISTED AND DO EXCEED DOCUMENT SECURITY INDUSTRY GUIDELINE

March 18, 2025	1.55 CARAT
GI Report No. LG991560181	VVS 2
ROUND BRILLIANT	EXCELLENT
	63.3%
	55%
	Medium to slightly thick (centered)
	Polished
	EXCELLENT
	NONE
	lg991560181
Carat Weight	Color Grade
2.28 - 2.34 X 4.63 MM	Clarity Grade
	Cut Grade
	Depth
	Table
	Girdle
	Culet
	Polish
	Symmetry
	Fluorescence
	Inscriptions(s)
Comments:	
The Laboratory Grown Diamond was produced by the Chemical Vapor Deposition (CVD) growth process.	
Type IIG	