



# INTERNATIONAL GEMOLOGICAL INSTITUTE

ELECTRONIC COPY

## LABORATORY GROWN DIAMOND REPORT

LG691581231

### LABORATORY GROWN DIAMOND REPORT

#### IGI LABORATORY GROWN DIAMOND IDENTIFICATION REPORT

April 8, 2025  
IGI Report Number LG691581231  
Description LABORATORY GROWN DIAMOND  
Shape and Cutting Style OVAL MODIFIED BRILLIANT  
Measurements 7.93 X 5.79 X 3.87 MM

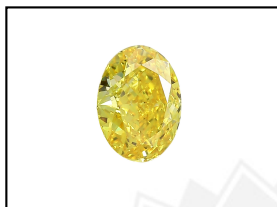
#### GRADING RESULTS

Carat Weight 1.36 CARAT  
Color Grade FANCY VIVID YELLOW  
Clarity Grade VS 1

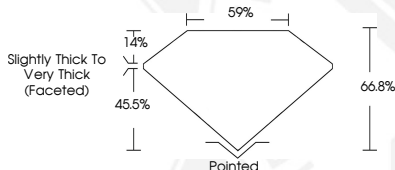
#### ADDITIONAL GRADING INFORMATION

Polish VERY GOOD  
Symmetry VERY GOOD  
Fluorescence NONE  
Inscription(s) IGI LG691581231

Comments: As Grown - No indication of post-growth treatment. This Laboratory Grown Diamond was created by High Pressure High Temperature (HPHT) growth process.



LASERSCRIBE<sup>SM</sup>  
Sample Images Used



#### IGI LABORATORY GROWN DIAMOND ID REPORT

April 8, 2025  
IGI Report Number LG691581231  
OVAL MODIFIED BRILLIANT  
7.93 X 5.79 X 3.87 MM  
Carat Weight 1.36 CARAT  
Color Grade FANCY VIVID YELLOW  
Clarity Grade VS 1  
Polish VERY GOOD  
Symmetry VERY GOOD  
Fluorescence NONE  
Inscription(s) IGI LG691581231  
Comments: As Grown - No indication of post-growth treatment. This Laboratory Grown Diamond was created by High Pressure High Temperature (HPHT) growth process.

#### IGI LABORATORY GROWN DIAMOND ID REPORT

April 8, 2025  
IGI Report Number LG691581231  
OVAL MODIFIED BRILLIANT  
7.93 X 5.79 X 3.87 MM  
Carat Weight 1.36 CARAT  
Color Grade FANCY VIVID YELLOW  
Clarity Grade VS 1  
Polish VERY GOOD  
Symmetry VERY GOOD  
Fluorescence NONE  
Inscription(s) IGI LG691581231  
Comments: As Grown - No indication of post-growth treatment. This Laboratory Grown Diamond was created by High Pressure High Temperature (HPHT) growth process.



THIS DOCUMENT WAS PRODUCED WITH THE FOLLOWING SECURITY MEASURES: SPECIAL DOCUMENT PAPER, INK SCREENS, WATERMARK, BACKGROUND DESIGN, HOLOGRAM AND OTHER SECURITY FEATURES NOT LISTED AND DO EXCEED DOCUMENT SECURITY INDUSTRY GUIDELINES.

For terms & conditions and to verify this report, please visit [www.igi.org](http://www.igi.org)