

INTERNATIONAL
GEMOLOGICAL
INSTITUTE

ELECTRONIC COPY

LABORATORY GROWN DIAMOND REPORT

March 21, 2025

IGI Report Number

Description

Shape and Cutting Style

Measurements

LG691586074

LABORATORY GROWN DIAMOND

ROUND BRILLIANT

9.15 - 9.20 x 5.57 mm

GRADING RESULTS

Carat Weight

Color Grade

Clarity Grade

Cut Grade

2.83 CARATS

D

VS 1

IDEAL

ADDITIONAL GRADING INFORMATION

Polish

Symmetry

Fluorescence

Inscription(s)

Comments: HEARTS & ARROWS

This Laboratory Grown Diamond was created by Chemical Vapor Deposition (CVD) growth process. Type IIa

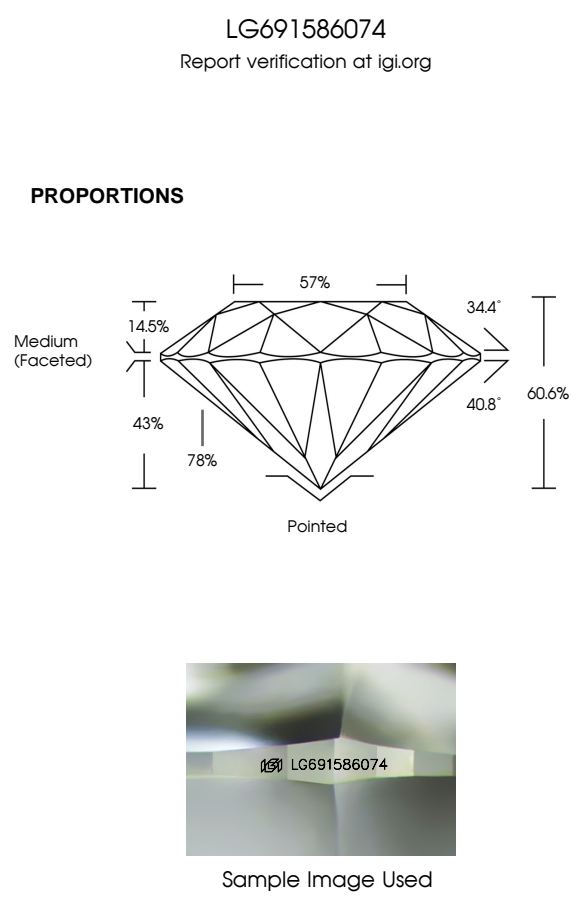
EXCELLENT

EXCELLENT

NONE

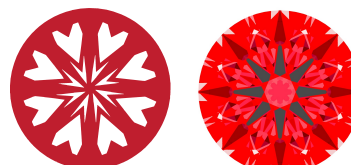
IGI LG691586074

IGI LG691586074



LIGHT PERFORMANCE REPORT

Light Performance Grade: Exceptional



Ideal-Scope representation

LowModerateHighSuperiorExceptional

Light Performance

Brightness

Fire

Contrast

COLOR

D E F G H I J FaintVery LightLight


CLARITY

IFVVS¹⁻²VS¹⁻²SI¹⁻²I¹⁻³

Internally FlawlessVery Very Slightly IncludedVery Slightly IncludedSlightly IncludedIncluded

© IGI 2020, International Gemological Institute

FD - 10 20



March 21, 2025

IGI Report Number

Description

Shape and Cutting Style

Measurements

GRADING RESULTS

Carat Weight

Color Grade

Clarity Grade

Cut Grade

LG691586074

LABORATORY GROWN DIAMOND

ROUND BRILLIANT

9.15 - 9.20 X 5.57 MM

2.83 CARATS

D

VS 1

IDEAL

ADDITIONAL GRADING INFORMATION

Polish

Symmetry

Fluorescence

Inscription(s)

Comments: HEARTS & ARROWS

This Laboratory Grown Diamond was created by Chemical Vapor Deposition (CVD) growth process. Type IIa

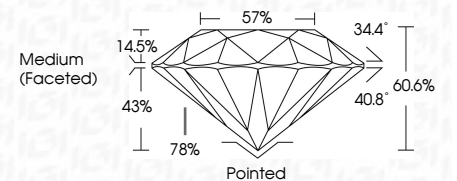
EXCELLENT


EXCELLENT

NONE

IGI LG691586074

IGI LG691586074





IGI

March 21, 2025

IGI Report No LG691586074

ROUND BRILLIANT

9.15 - 9.20 X 5.57 MM

Carat Weight

Color Grade

Clarity Grade

Cut Grade

Depth

Table

Grade

Medium (Faceted)

Pointed

Polish

Symmetry

Fluorescence

Inscription(s)

Comments: HEARTS & ARROWS

This Laboratory Grown Diamond was created by Chemical Vapor Deposition (CVD) growth process. Type IIa

2.83 CARATS

D

VS 1

IDEAL

60.6%

57%

EXCELLENT

EXCELLENT

NONE

IGI LG691586074