

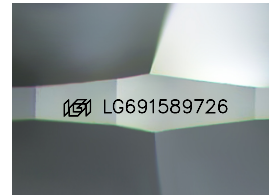
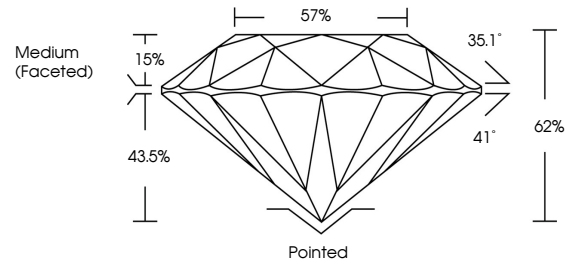


**INTERNATIONAL  
GEMOLOGICAL  
INSTITUTE**

**ELECTRONIC COPY**

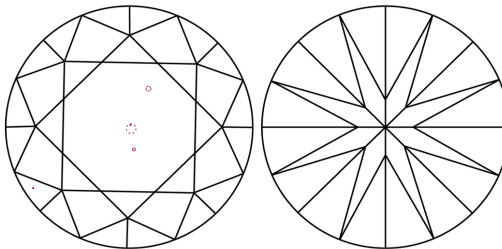
LG691589726  
Report verification at [igi.org](https://www.igi.org)

## PROPORTIONS



Sample Image Used

## CLARITY CHARACTERISTICS



## KEY TO SYMBOLS

Red symbols indicate internal characteristics.  
Green symbols indicate external characteristics.

## COLOR

D E F G H I J Faint Very Light Light

## CLARITY

IF                      WS<sup>1-2</sup>                      VS<sup>1-2</sup>                      SI<sup>1-2</sup>                      I<sup>1-3</sup>

|                        |                                |                           |                      |          |
|------------------------|--------------------------------|---------------------------|----------------------|----------|
| Internally<br>Flawless | Very Very<br>Slightly Included | Very<br>Slightly Included | Slightly<br>Included | Included |
|------------------------|--------------------------------|---------------------------|----------------------|----------|



March 24, 2025

IGI Report Number **LG691589726**

|             |                          |
|-------------|--------------------------|
| Description | LABORATORY GROWN DIAMOND |
|-------------|--------------------------|

Shape and Cutting Style **ROUND BRILLIANT**

|              |                       |
|--------------|-----------------------|
| Measurements | 8.19 - 8.22 X 5.09 MM |
|--------------|-----------------------|

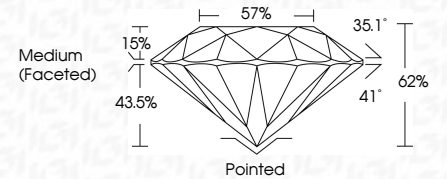
## GRADING RESULTS

Carat Weight **2.11 CARATS**

Color Grade **E**

Clarity Grade VS 2

Cut Grade **IDEAL**



### ADDITIONAL GRADING INFORMATION

Polish **EXCELLENT**Symmetry **EXCELLENT**Fluorescence **NONE**Inscription(s)  LG691589726

Comments: This Laboratory Grown Diamond was created by Chemical Vapor Deposition (CVD) growth process.  
Type IIa



IGI



© IGI 2020, International Gemological Institute

FD - 10 20

**www.igi.org**

THIS DOCUMENT WAS PRODUCED WITH THE FOLLOWING SECURITY MEASURES: SPECIAL DOCUMENT PAPER, INK SCREENS, WATERMARK, BACKGROUND DESIGNS, HOLOGRAM AND OTHER SECURITY FEATURES NOT LISTED AND DO EXCEED DOCUMENT SECURITY INDUSTRY GUIDELINES.

|  |                           |  |
|--|---------------------------|--|
| March 24, 2025   | GIA Report No. G591159726 |  |
| ROUND BRILLIANT  |                           |  |
| 1.89 - 8.22 X 5.09 MM  |                           |  |
| Carat Weight   | 2.11 CARATS               |  |
| Color Grade  | E                         |  |
| Clarity Grade  | VS.2                      |  |
| Cut Grade  | IDEAL                     |  |
| Depth  | 62%                       |  |
| Table  | 57%                       |  |
| Grade  | Medium (Fossil)           |  |
| Culet  | Pointed                   |  |
| Polish   | EXCELLENT                 |  |
| Symmetry   | EXCELLENT                 |  |
| Fluorescence   | NONE                      |  |
| Inscription(s)   | G591159726                |  |
| <b>Comments:</b><br>This Laboratory Grown Diamond was created by Chemical Vapor Deposition (CVD) growth process.<br>Type Icd |                           |  |