

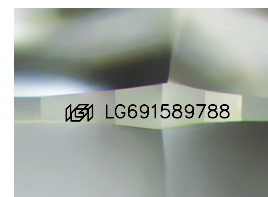
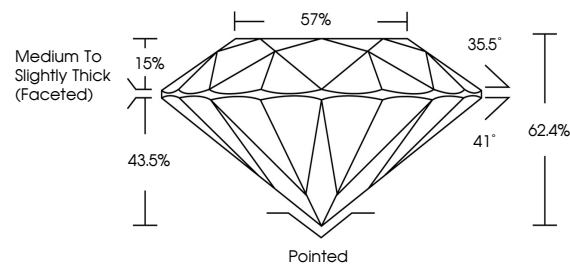


ELECTRONIC COPY

LABORATORY GROWN DIAMOND REPORT

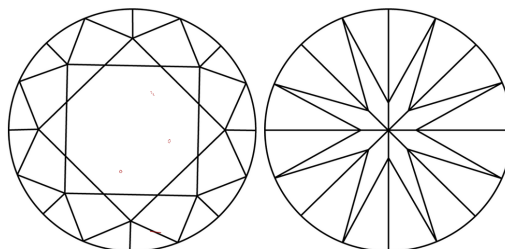
LG691589788
Report verification at igi.org

PROPORTIONS



Sample Image Used

CLARITY CHARACTERISTICS



KEY TO SYMBOLS

Red symbols indicate internal characteristics.
Green symbols indicate external characteristics.

COLOR

D E F G H I J Faint Very Light Light

CLARITY

IF WS¹⁻² VS¹⁻² SI¹⁻² |¹⁻³

Internally Flawless	Very Very Slightly Included	Very Slightly Included	Slightly Included	Included
------------------------	--------------------------------	---------------------------	----------------------	----------

LABORATORY GROWN DIAMOND REPORT



March 24, 2025

IGI Report Number **LG691589788**

Description	LABORATORY GROWN DIAMOND
-------------	--------------------------

Shape and Cutting Style **ROUND BRILLIANT**

Measurements 8.11 - 8.17 X 5.07 MM

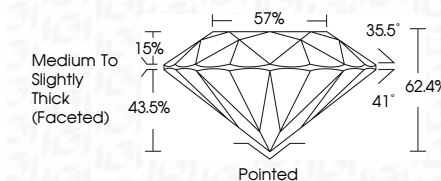
GRADING RESULTS

Carat Weight **2.07 CARATS**

Color Grade E

Clarity Grade VS 1

Cut Grade **IDEAL**



ADDITIONAL GRADING INFORMATION

Polish **EXCELLENT**Symmetry **EXCELLENT**Fluorescence **NONE**Inscription(s) LG691589788

Comments: This Laboratory Grown Diamond was created by Chemical Vapor Deposition (CVD) growth process.
Type IIa



© IGI 2020, International Gemological Institute

FD - 10 20



THIS DOCUMENT WAS PRODUCED WITH THE FOLLOWING SECURITY MEASURES: SPECIAL DOCUMENT PAPER, INK SCREENS, WATERMARK, BACKGROUND DESIGNS, HOLOGRAM AND OTHER SECURITY FEATURES NOT LISTED AND DO EXCEED DOCUMENT SECURITY INDUSTRY GUIDELINE

www.igi.org

March 24, 2025	2.07 CARATS
GI Report No. LG591589788	E
ROUND BRILLIANT	VS 1
	IDEAL
	62.4%
	57%
	Medium to Slightly Thick (Faceted)
	Polished
	EXCELLENT
	SYMMETRY
	FLUORESCENCE
	None
	1651 LG591589788
Comments:	
	Chemically Grown Diamond was created by Chemical Vapor Deposition (CVD) growth process.
	Type IIa