



**ELECTRONIC COPY**

## LABORATORY GROWN DIAMOND REPORT

March 17, 2025	
IGI Report Number	LG691590322
Description	LABORATORY GROWN DIAMOND
Shape and Cutting Style	ROUND BRILLIANT
Measurements	6.67 - 6.74 X 4.02 MM

## GRADING RESULTS

Carat Weight	1.10 CARAT
Color Grade	D
Clarity Grade	VS 2
Cut Grade	IDEAL

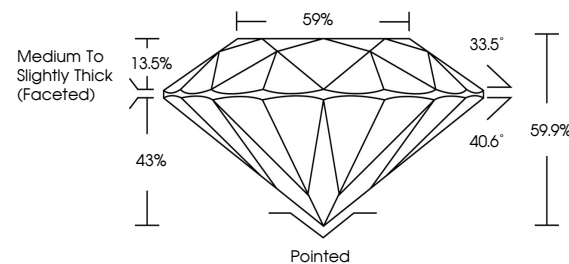
### ADDITIONAL GRADING INFORMATION

Polish	EXCELLENT
Symmetry	EXCELLENT
Fluorescence	NONE
Inscription(s)	 LG691590322

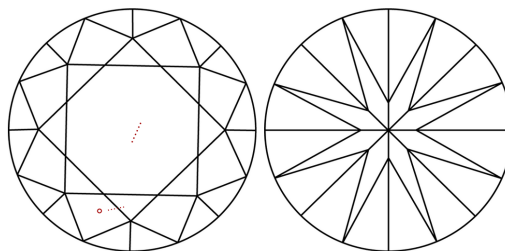
Comments: This Laboratory Grown Diamond was created by Chemical Vapor Deposition (CVD) growth process.  
Type IIa

LG691590322  
Report verification at [igi.org](https://igi.org)

## PROPORTIONS

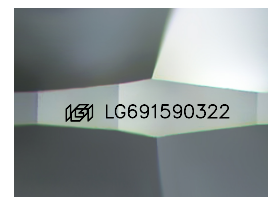


## CLARITY CHARACTERISTICS



## KEY TO SYMBOLS

Red symbols indicate internal characteristics.  
Green symbols indicate external characteristics.



Sample Image Used

## COLOR

D E F G H I J Faint Very Light Light

## CLARITY

IF WS<sup>1-2</sup> VS<sup>1-2</sup> SI<sup>1-2</sup> |<sup>1-3</sup>

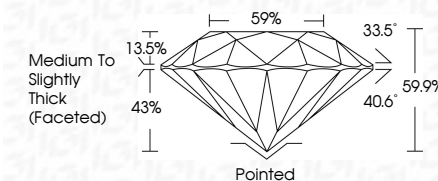
Internally Flawless	Very Very Slightly Included	Very Slightly Included	Slightly Included	Included
------------------------	--------------------------------	---------------------------	----------------------	----------



March 17, 2025	
IGI Report Number	LG691590322
Description	LABORATORY GROWN DIAMOND
Shape and Cutting Style	ROUND BRILLIANT
Measurements	6.67 - 6.74 X 4.02 MM

## GRADING RESULTS

Carat Weight	1.10 CARAT
Color Grade	D
Clarity Grade	VS 2
Cut Grade	IDEAL



### ADDITIONAL GRADING INFORMATION

Polish	EXCELLENT
Symmetry	EXCELLENT
Fluorescence	NONE
Inscription(s)	 LG691590322
<p>Comments: This Laboratory Grown Diamond was created by Chemical Vapor Deposition (CVD) growth process.</p> <p>Type IIa</p>	



© IGI 2020, International Gemological Institute

FD - 10 20



THIS DOCUMENT WAS PRODUCED WITH THE FOLLOWING SECURITY MEASURES: SPECIAL DOCUMENT PAPER, INK SCREENS, WATERMARK, BACKGROUND DESIGNS, HOLOGRAM AND OTHER SECURITY FEATURES NOT LISTED AND DO EXCEED DOCUMENT SECURITY INDUSTRY GUIDELINE

**www.igi.org**

